



Greenlam
LAMINATES

LEXUS
COLLECTION

1.50 M M LAMINATES

IN BEAUTY LIES STRENGTH



"We transform spaces into expressions of true art. Our teams & our innovations are driven with a single-minded propositions to create unique products, making us amongst the top 3 manufacturers of decorative laminates in the world.

Since our inception, we have been a hallmark of exceptional artistry and an unbridled passion for innovation. We offer end-to-end surfacing solutions with our expansive selection of laminates, compacts, veneers, engineered wooden floors, engineered wooden doors, plywood & Greenlam MFC. With five state-of-the-art manufacturing facilities in the country located at Behror (Rajasthan), Nalagarh (Himachal Pradesh), Prantij (Gujarat), Tindivanam (Tamil Nadu) and Naidupeta (Andhra Pradesh) we are the first choice for individuals, architects & interior designers when it comes to transforming living spaces. Our vibrant designs add a touch of magnificence to any space with an assortment of decors furnished with captivating features. With a channel partner spread across the country & a robust team of sales professionals, Greenlam is just a call away to turn your space into an unforgettable experience."

1.50 M M LAMINATES

Introducing Greenlam's pioneering 1.50 mm fluted laminates, a first in the Indian laminate industry. These vertical 3D stripe laminates combine woods, patterns, and solid colors to create spectacular contemporary decors. Engineered for superior durability and design versatility, they offer enhanced resilience against wear and tear. They are inspired by the fluted walls which are iconic to traditional architecture, creating spaces that reflect with both timeless elegance and a modern vision.

FEATURES



ANTI-VIRUS
ANTI-BACTERIAL *



HIGHLY DURABLE



DEEP FLUTED
DESIGNS



SCRATCH RESISTANT

Disclaimer:

* "As per the test report SARS Cov-2 virus gets more than 99% retarded after 45 mins of the contact"

** "As per the test report virus gets 99.99% retarded in 24 hours of contact"

*** "As per test report bacteria gets 99.99% retarded after 24 hours of contact"

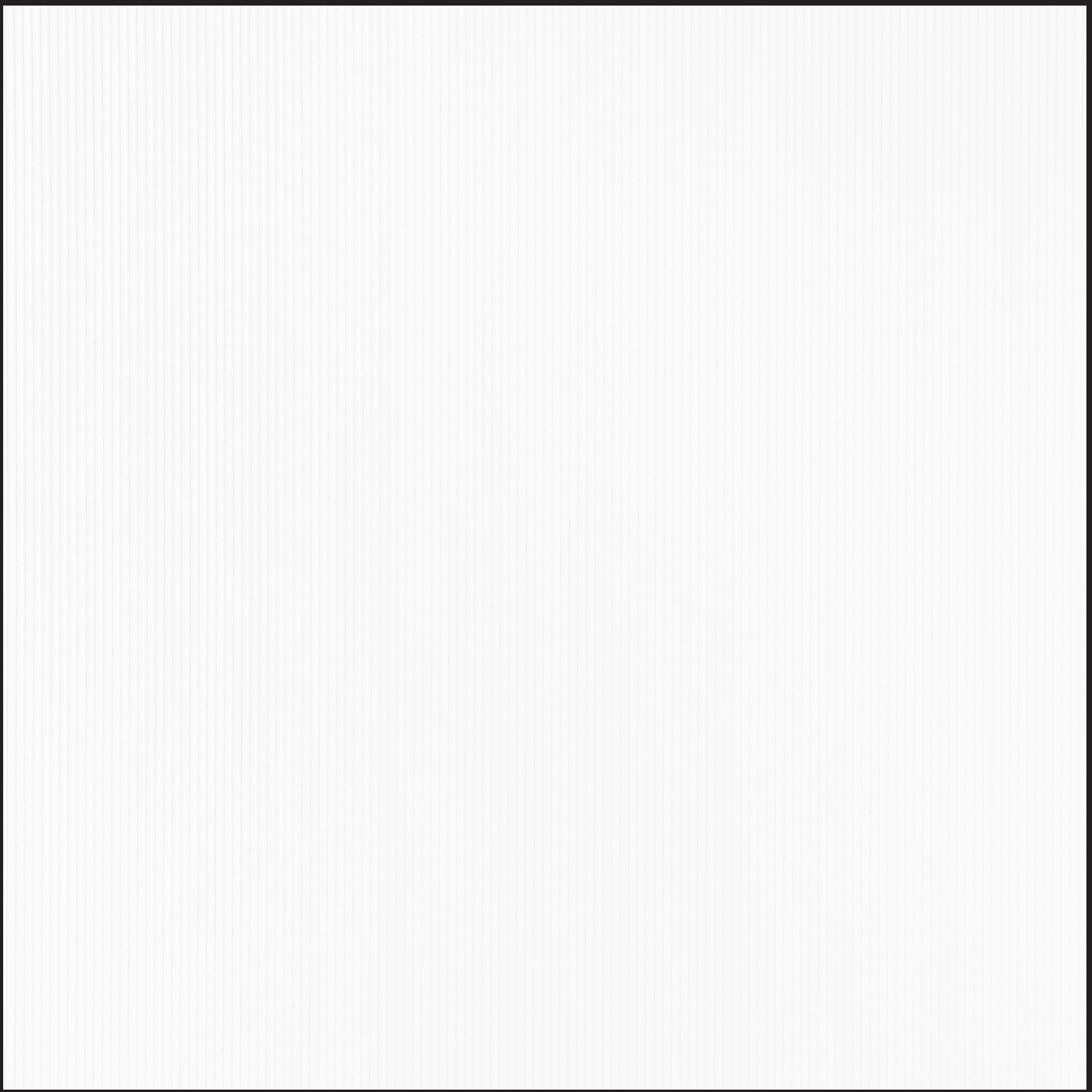
LEXUS
COLLECTION

ECHOE

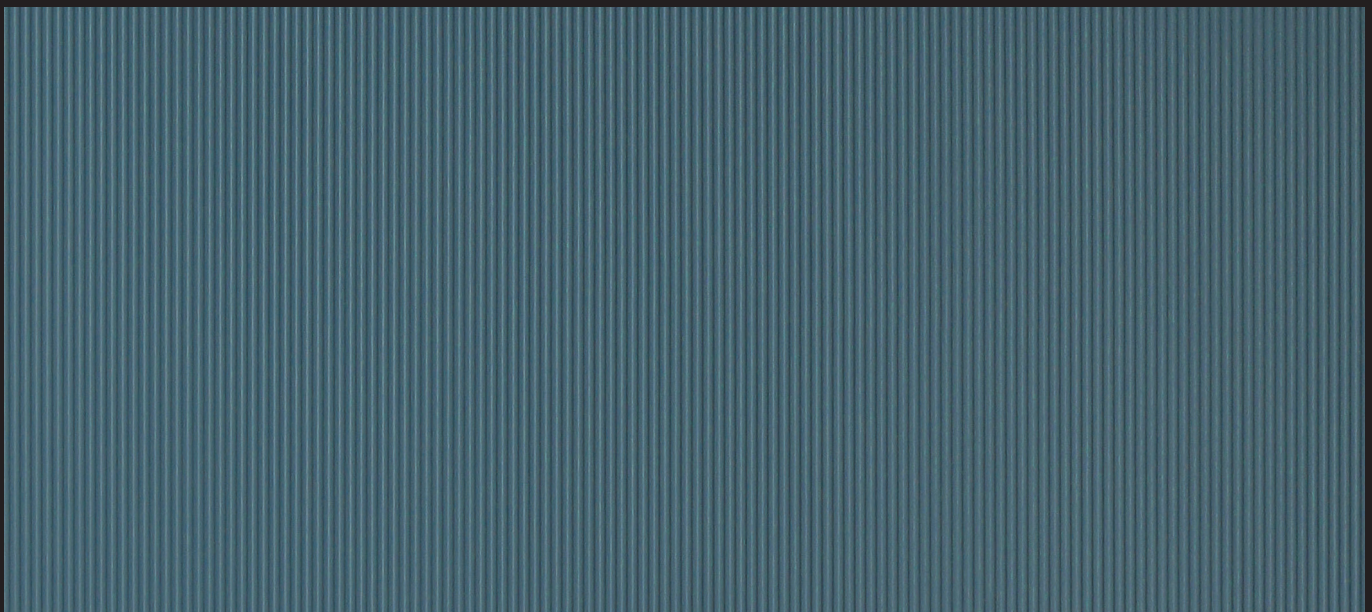
1.50 M M L A M I N A T E S

It features seamless flute patterns which are inspired by the continuity of musical rhythms, creating a smooth and flowing look that enhances the beauty of any interior.

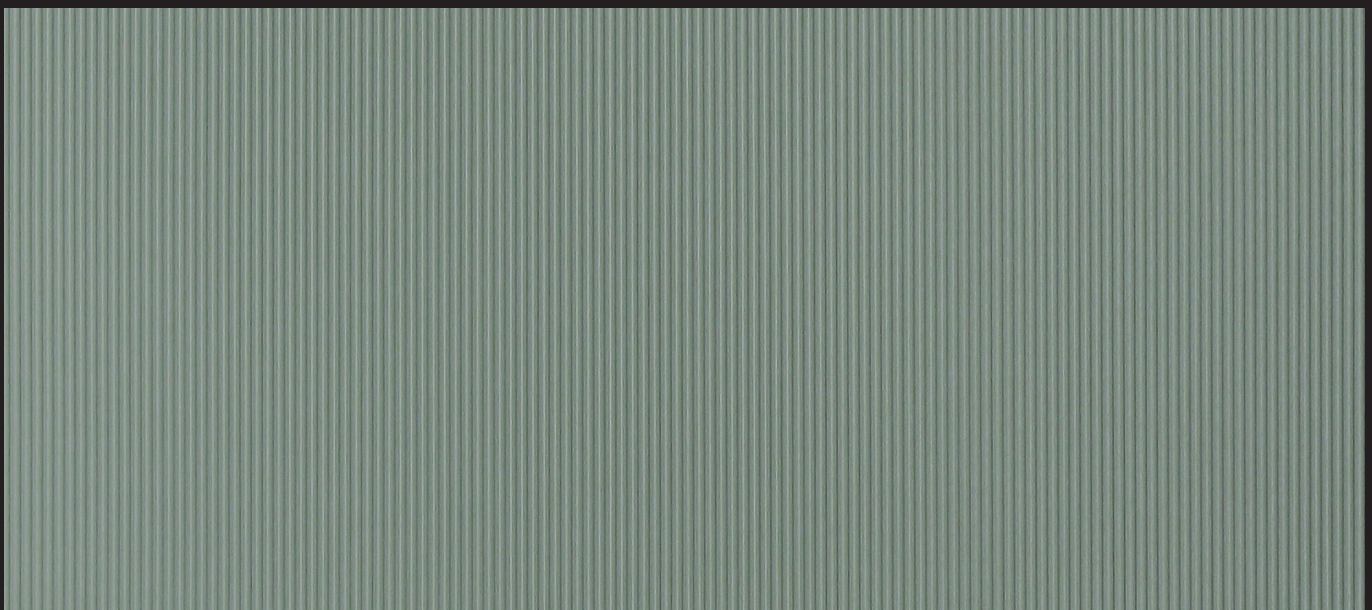




20107 ECO | Wool

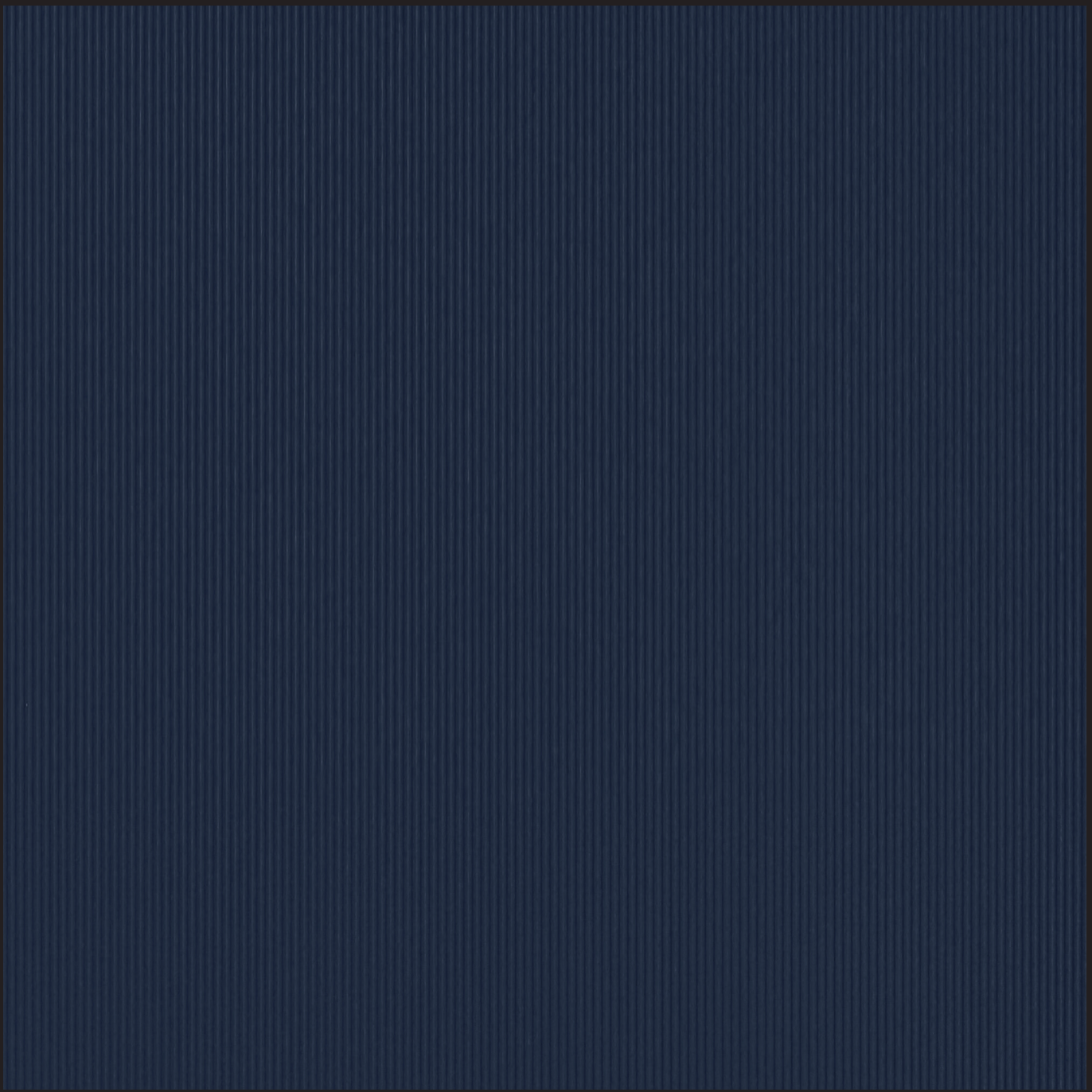


20467 ECO | Mermaid



25592 ECO | Kota Sage

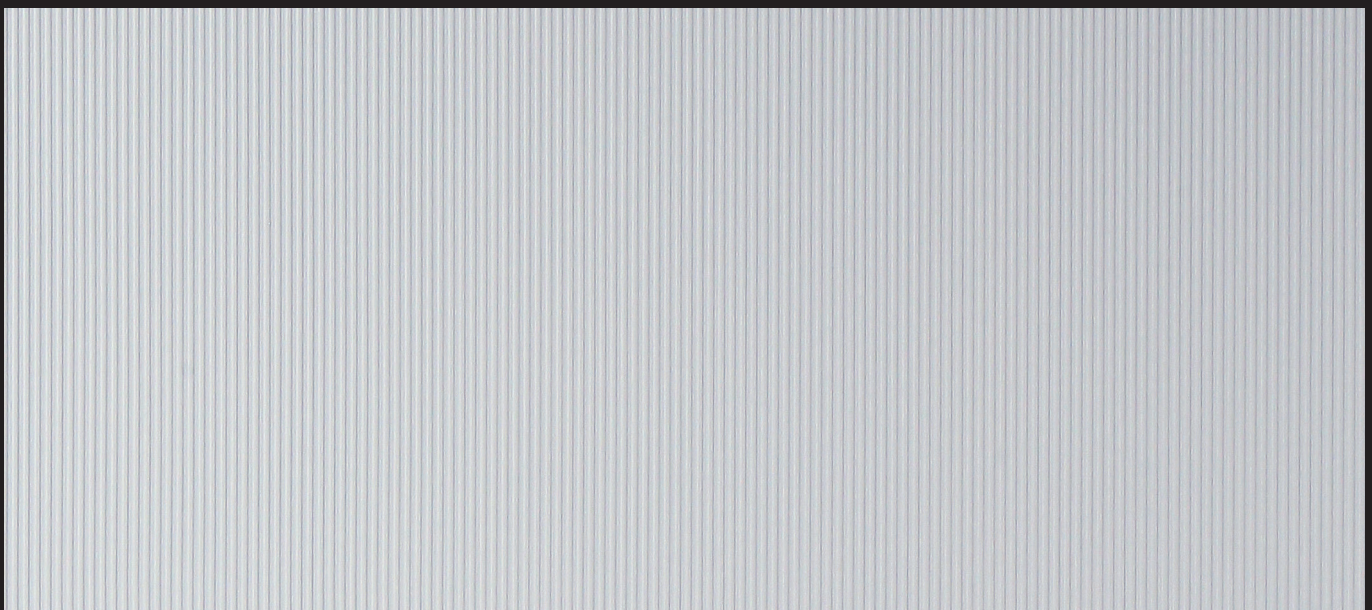




20297 ECO | Blue Galaxy

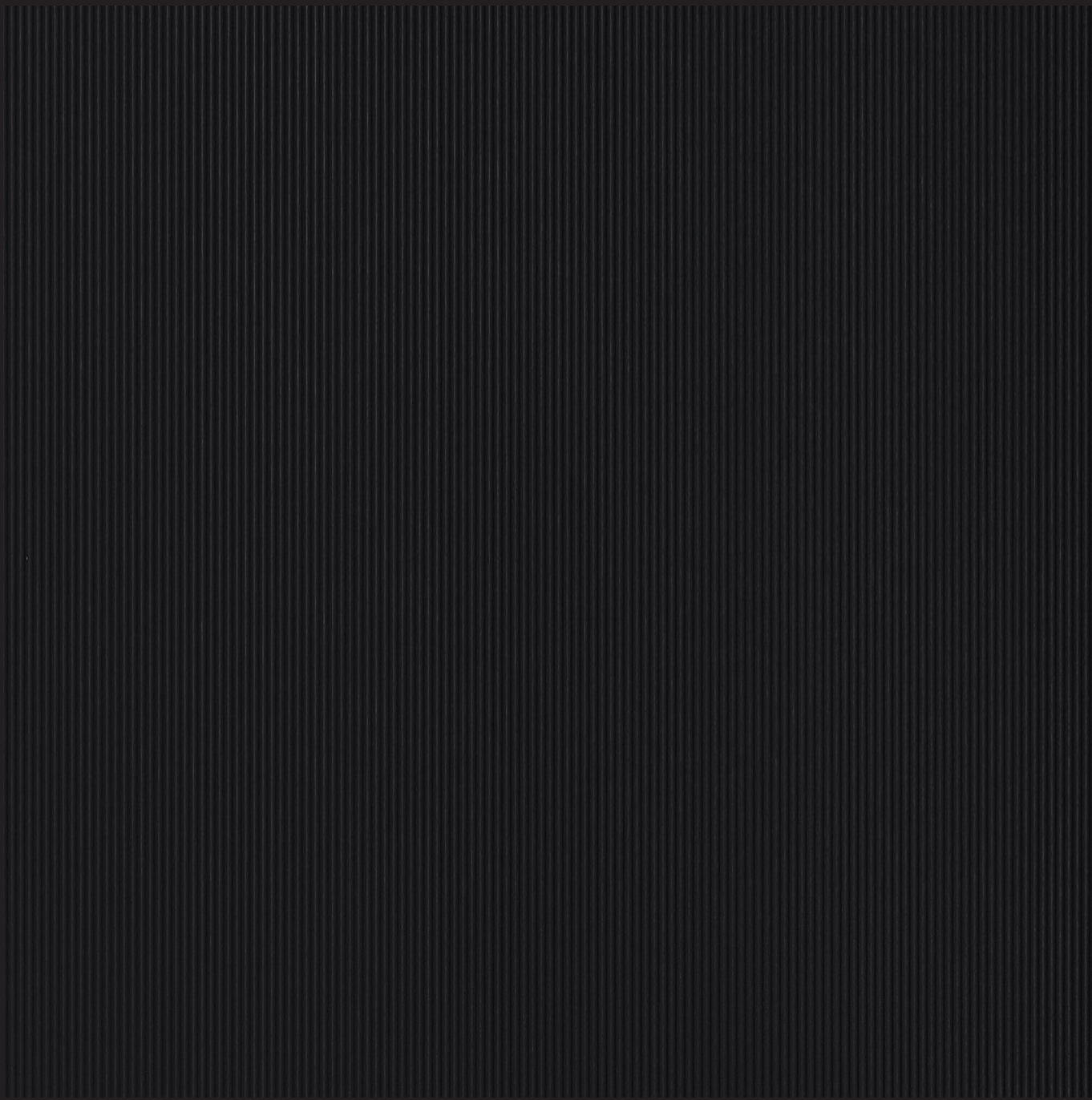


20201 ECO | Maroon

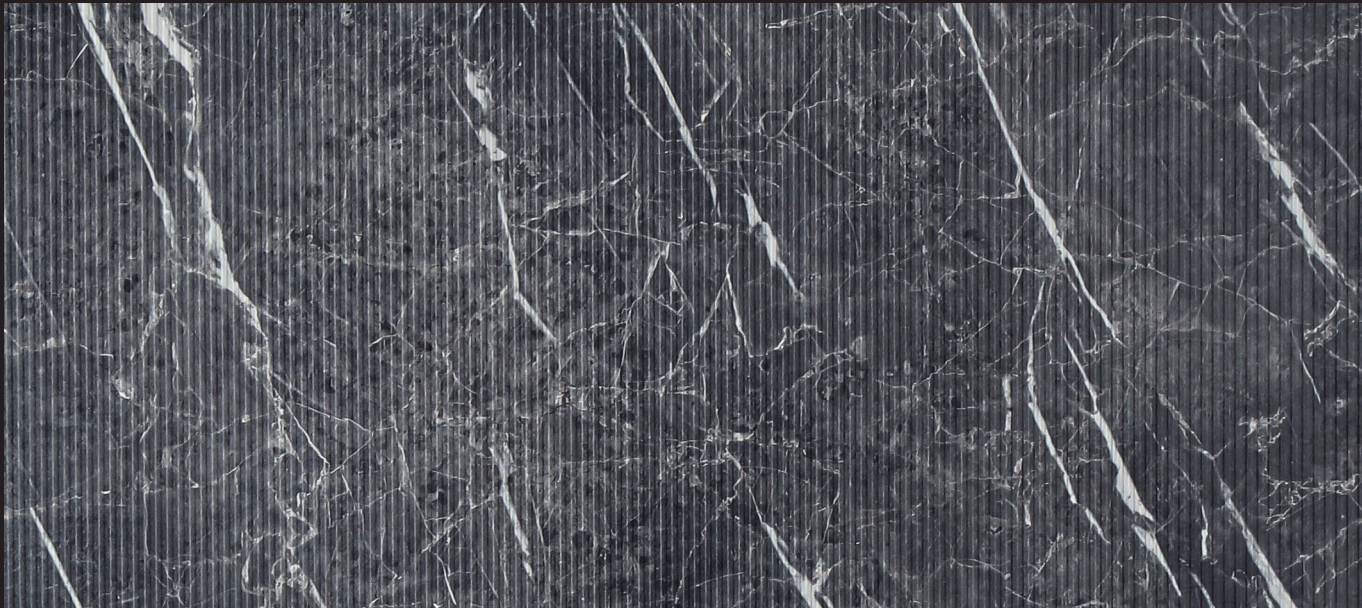


25591 ECO | Kota Pearl





20401 ECO | Black

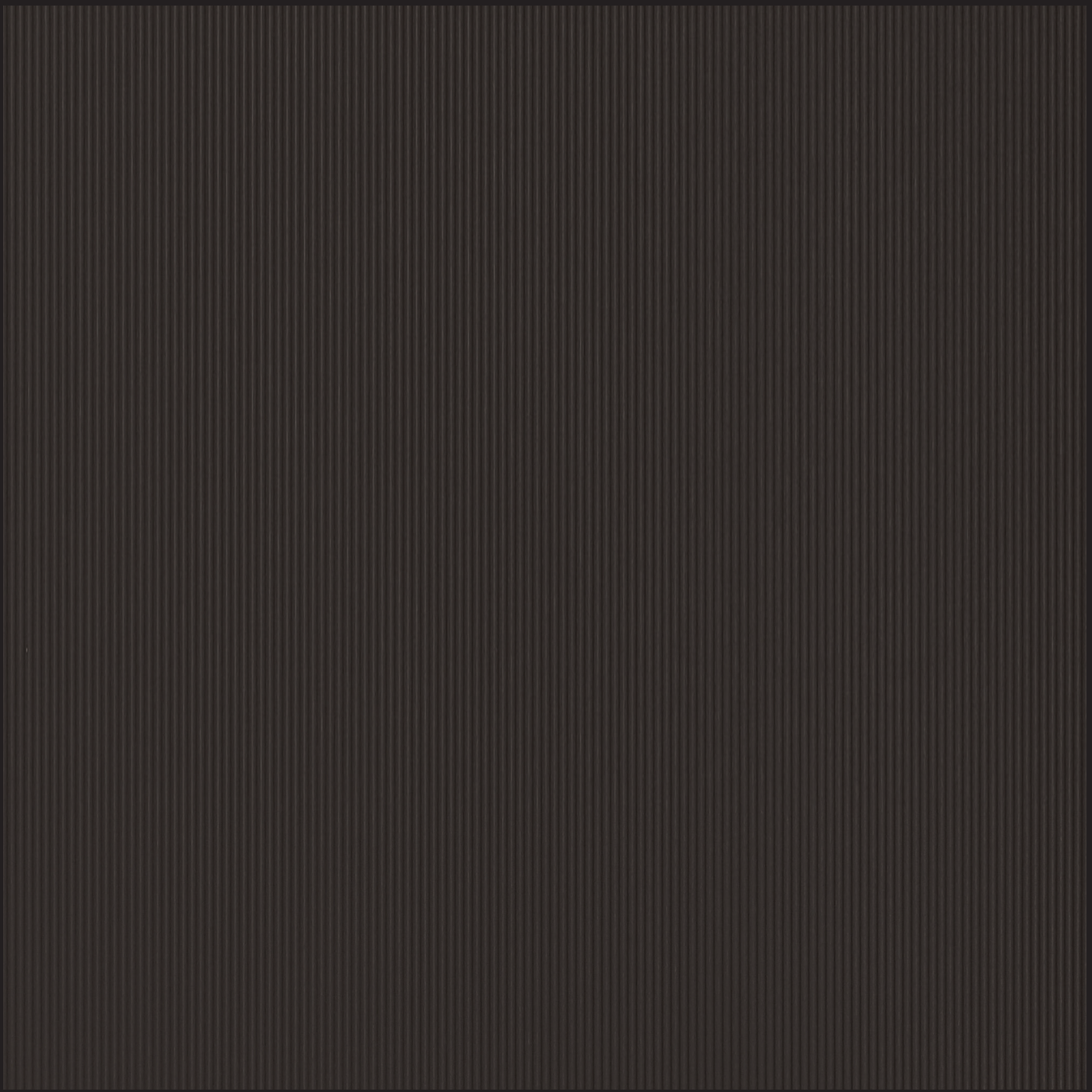


25596 ECO | Manitoba

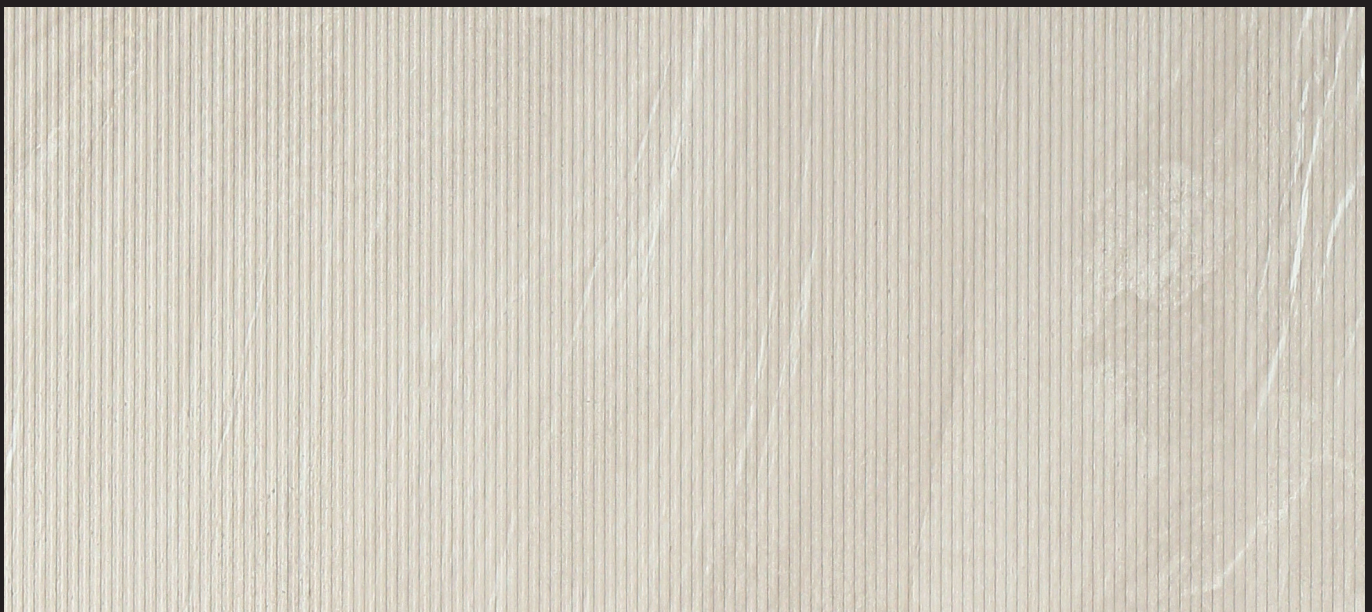


20930 ECO | Glisten

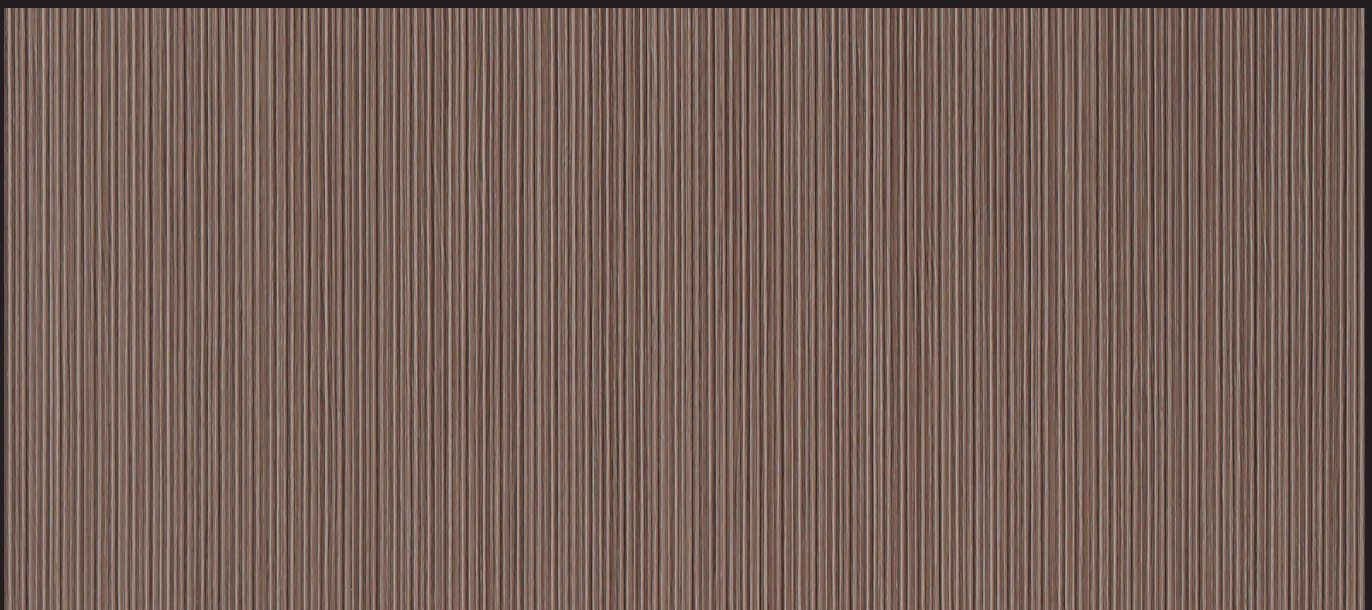




20182 ECO | Bark

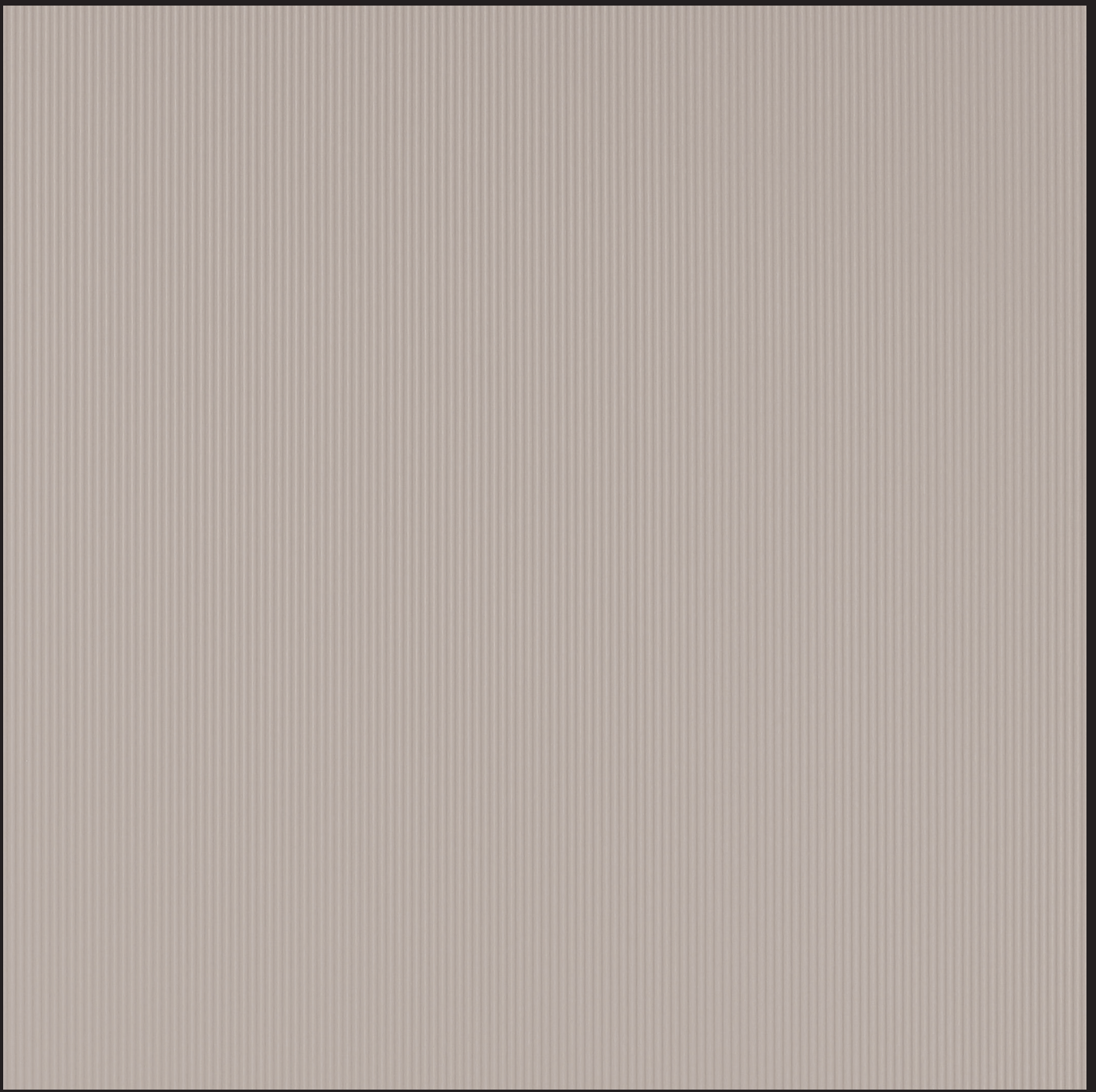


25579 ECO | Sandstone Beige

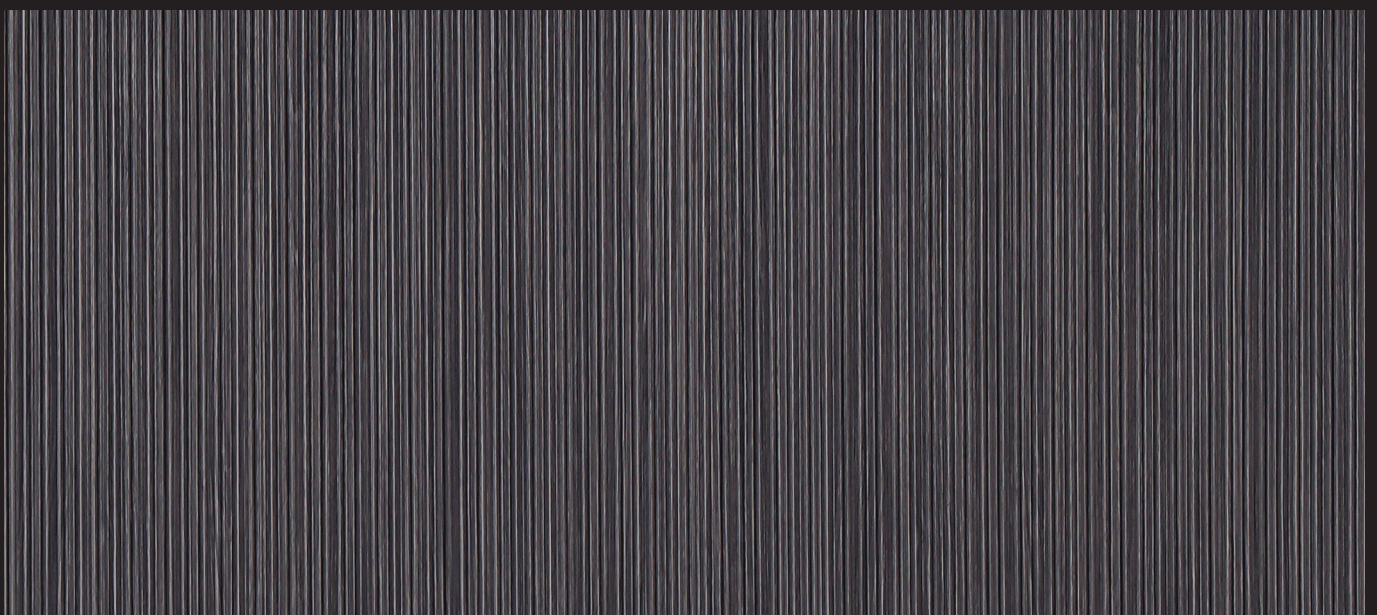


25096 ECO | Arcana Brown

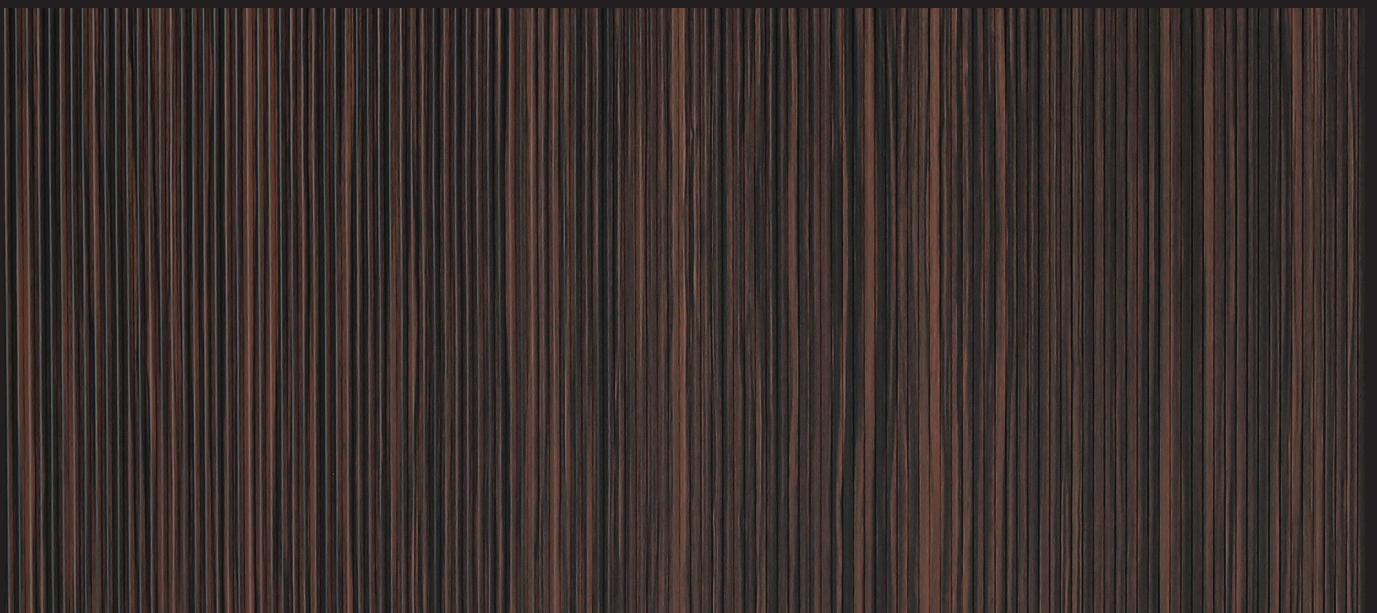




20133 ECO | Moon Stone



25097 ECO | Arcana Grey



20788 ECO | Real Ebony



LEXUS
COLLECTION

S H O R E

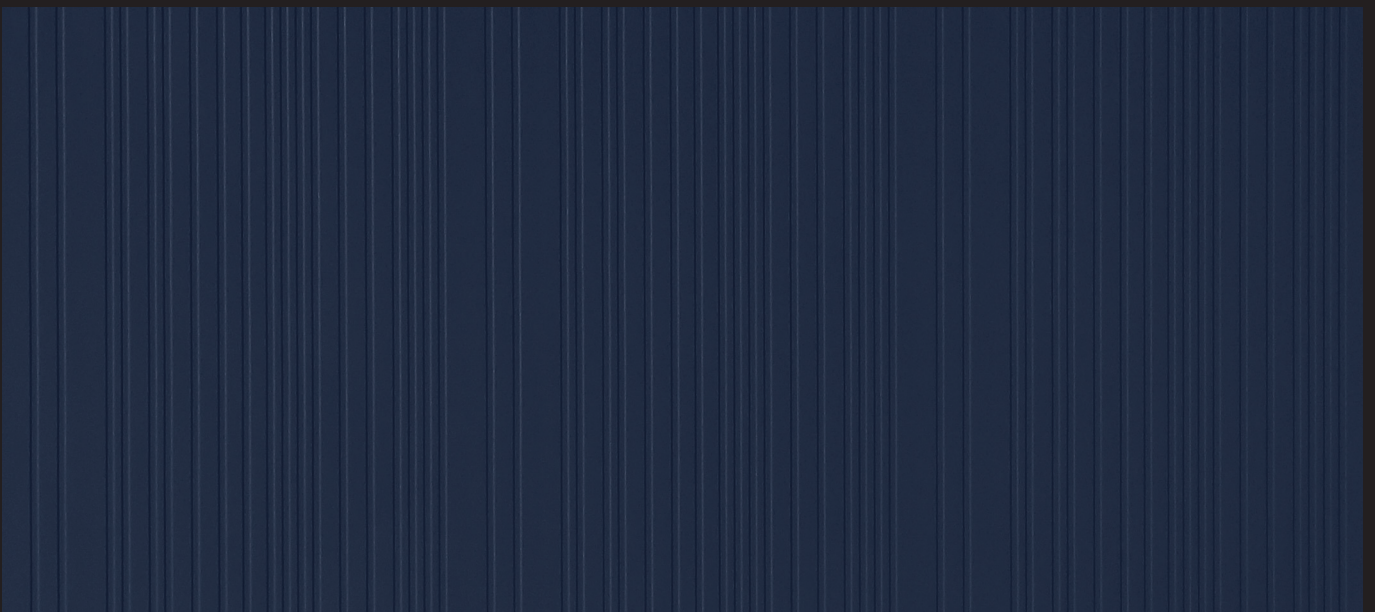
1.50 M M L A M I N A T E S

Crafted with precision, this design features layered grooves with multiple flat outer layers, achieving a balanced and pleasing composition that remains perpetually stylish.

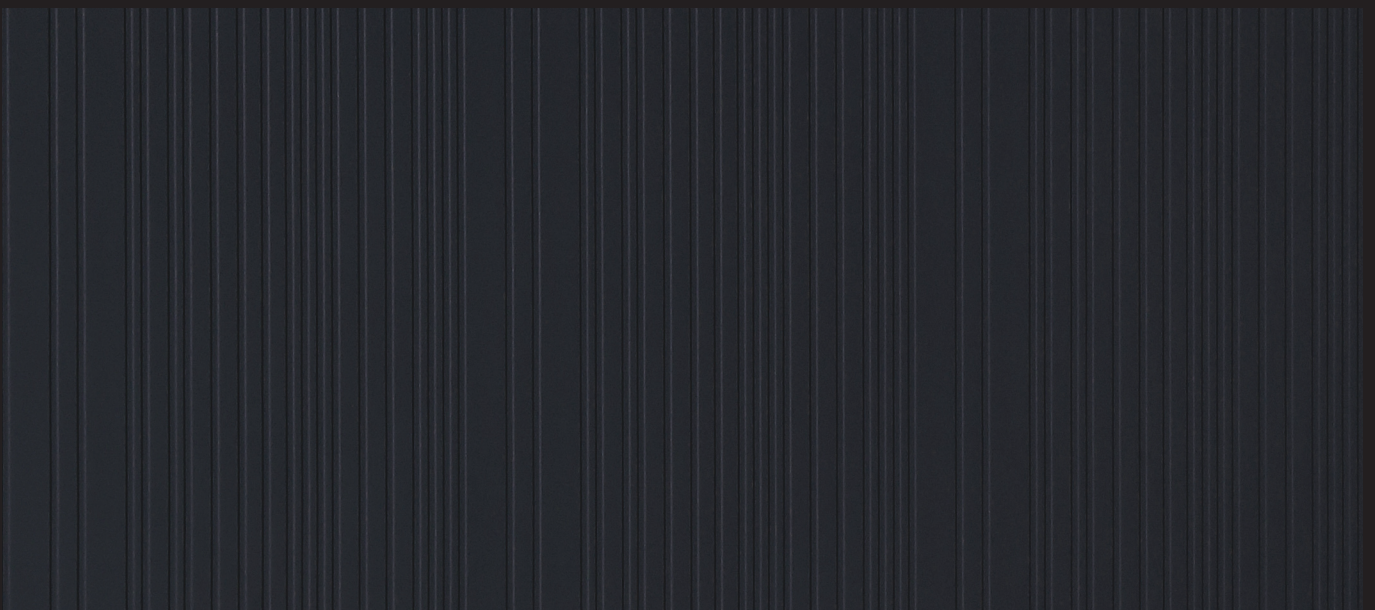
A bold, cyan-colored uppercase letter 'W' with a thick, uniform stroke. The letter features a central vertical groove that is slightly wider than the side grooves, creating a sense of depth and balance.A bold, cyan-colored lowercase letter 'r' with a thick, uniform stroke. The letter has a rounded, bowl-like shape with a small, curved tail that extends to the right, giving it a dynamic and elegant appearance.A bold, cyan-colored uppercase letter 'O' with a thick, uniform stroke. The letter is perfectly circular and has a consistent thickness throughout, conveying a sense of stability and simplicity.A bold, cyan-colored uppercase letter 'H' with a thick, uniform stroke. The letter consists of two vertical bars connected by a horizontal bar in the middle, all with equal thickness, creating a strong and balanced geometric form.A bold, cyan-colored uppercase letter 'S' with a thick, uniform stroke. The letter is a smooth, continuous curve that starts with a small hook on the left and ends with a small hook on the right, giving it a fluid and organic feel.



25594 SHR | Olympia

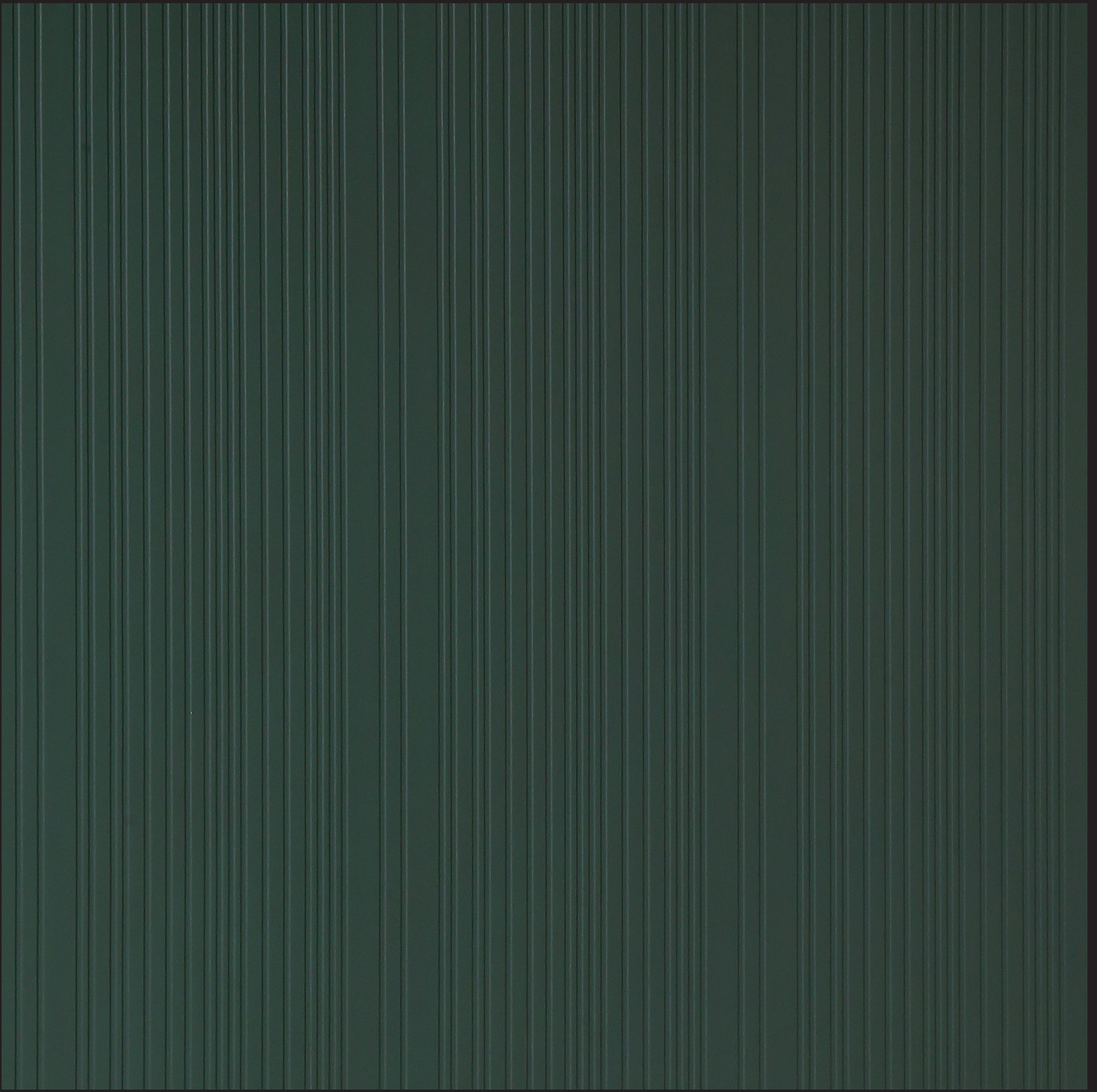


20297 SHR | Blue Galaxy



20277 SHR | Charcoal





20245 SHR | Dark Green

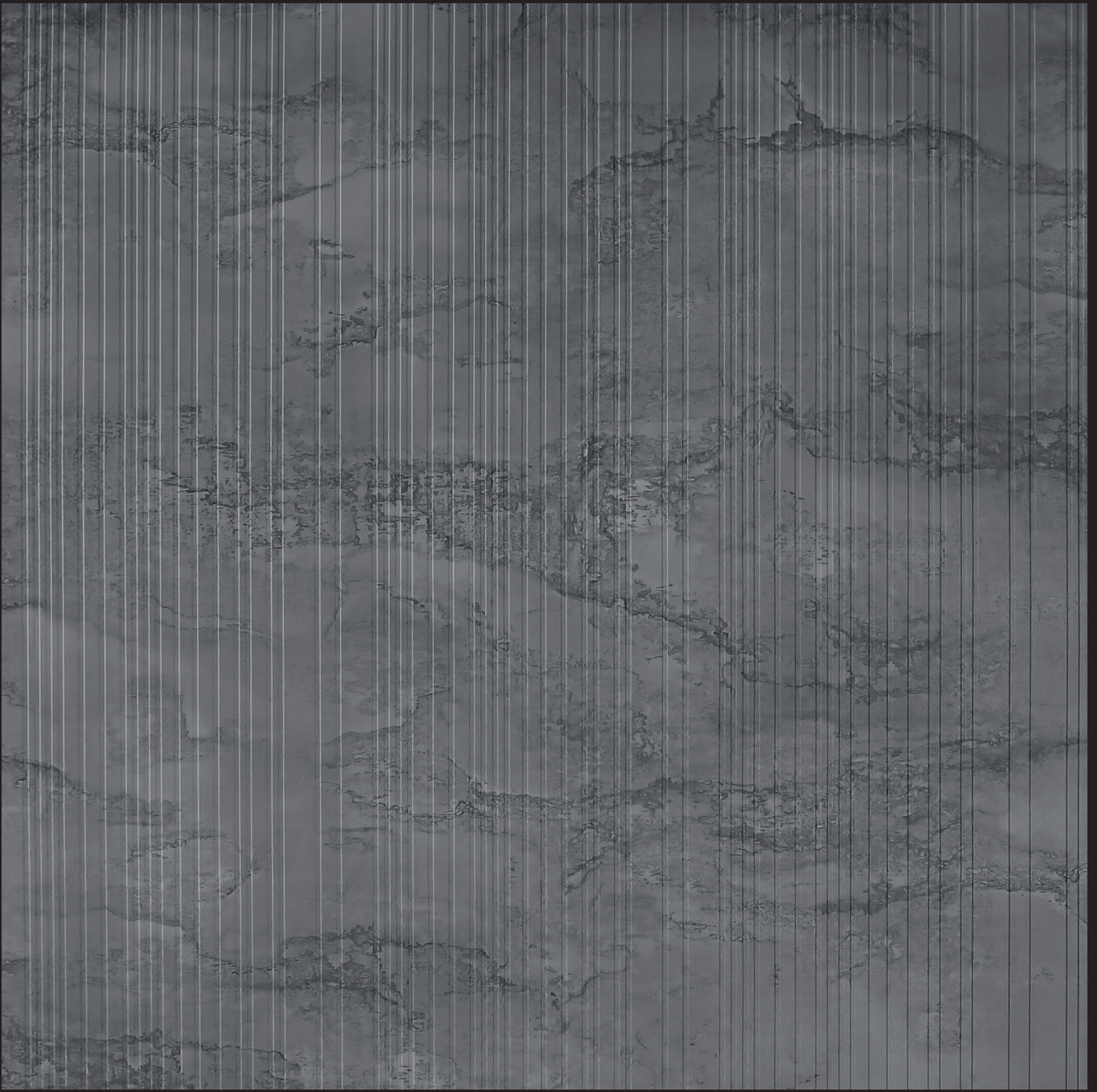


20107 SHR | Wool

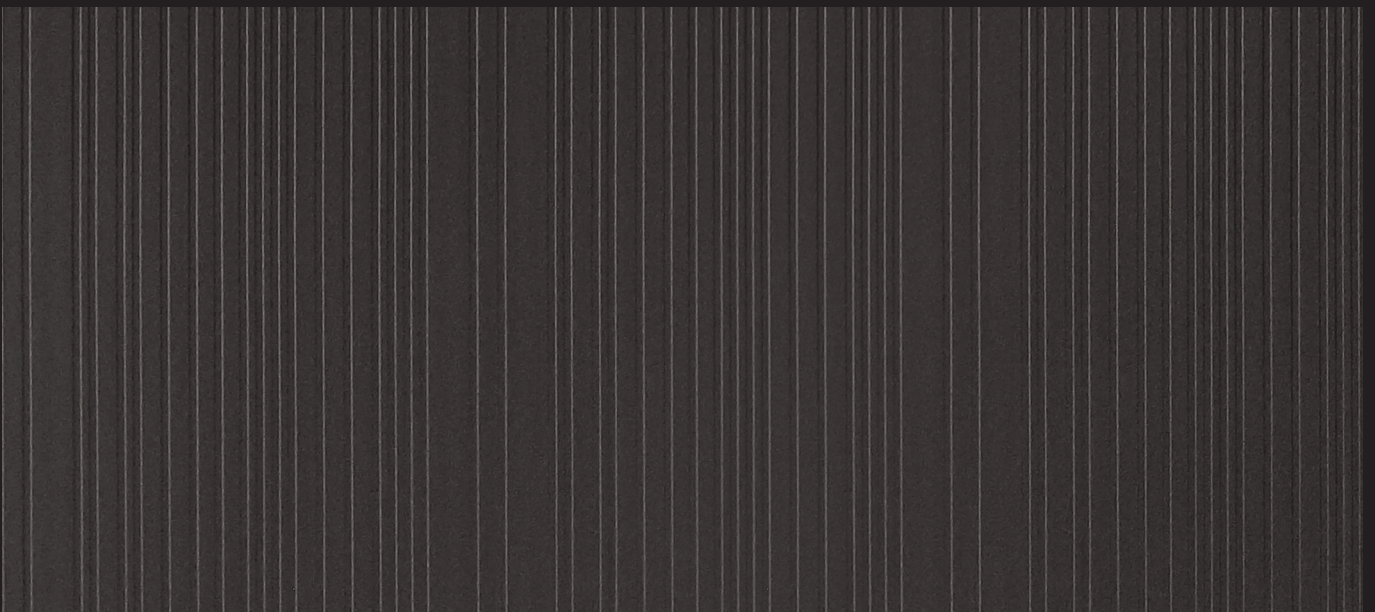


25575 SHR | Black Marmor

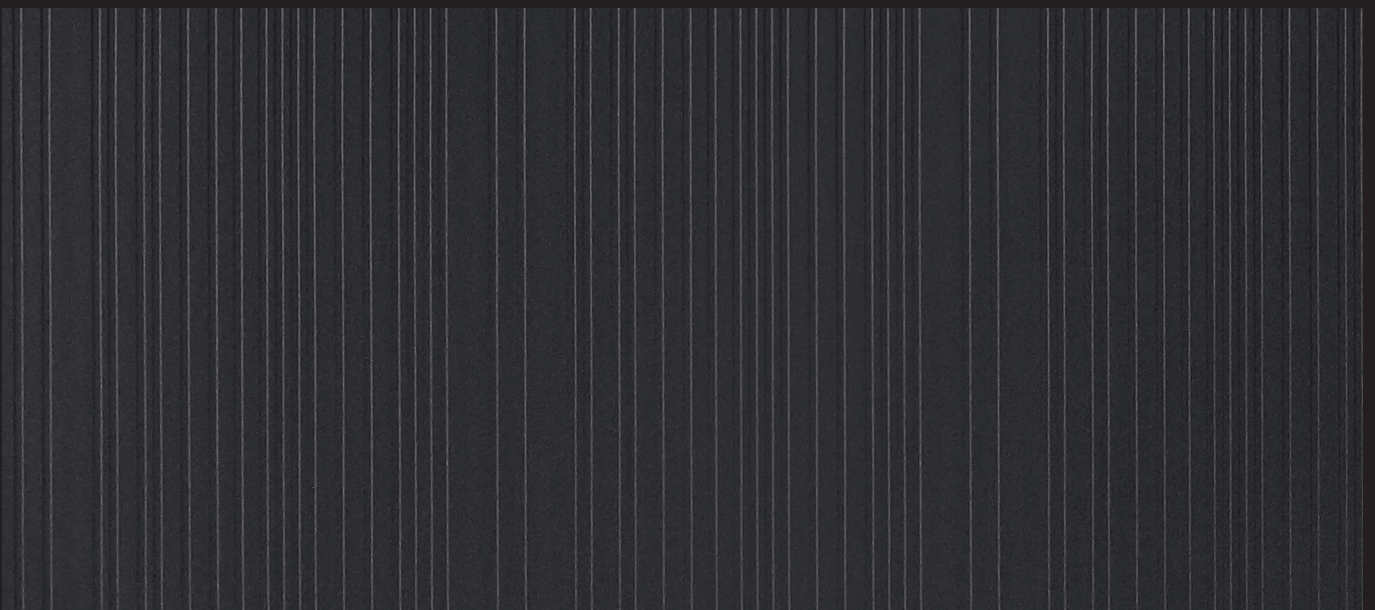




20937 SHR | Chicago Steel

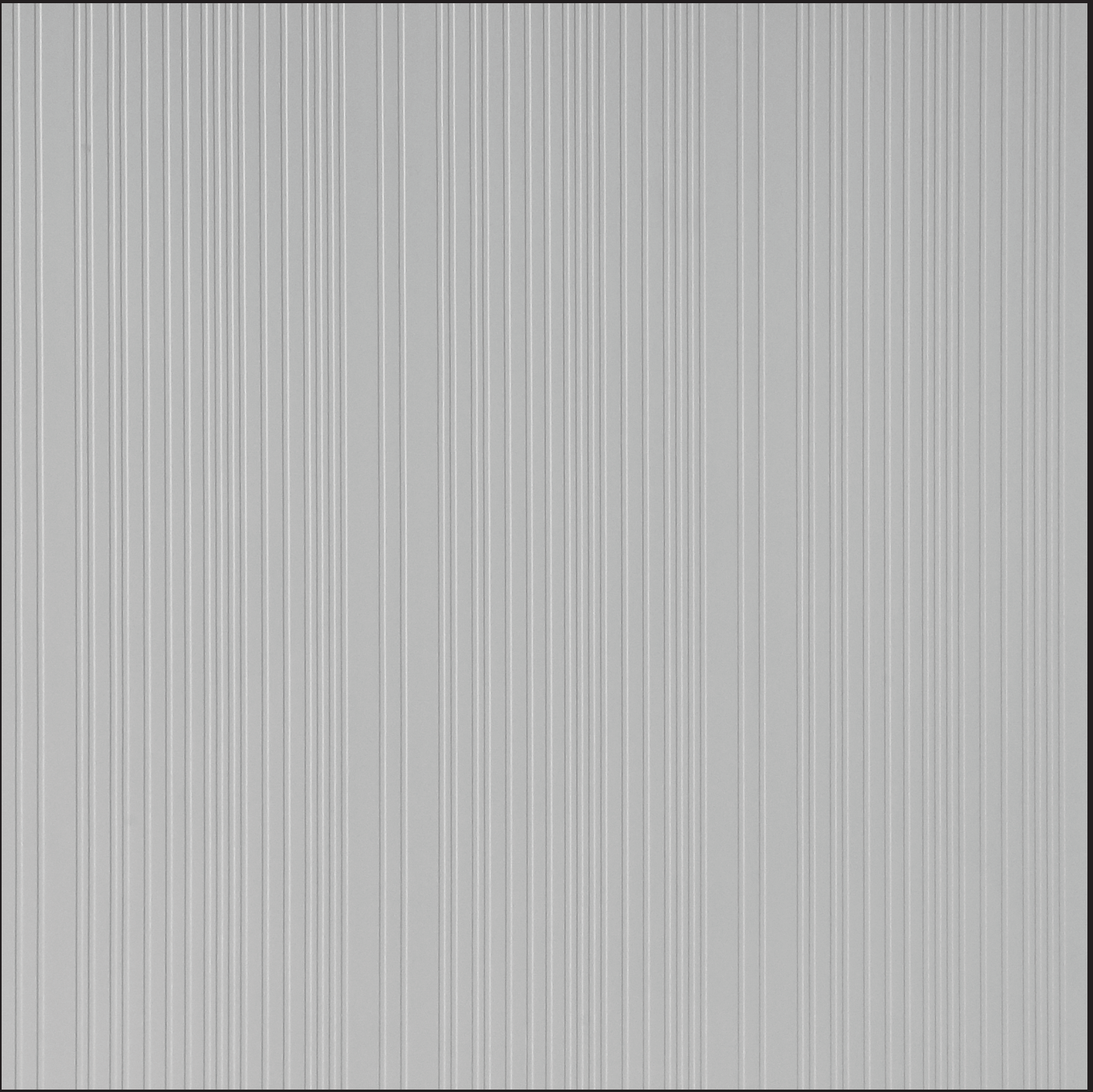


20931 SHR | Shimmer

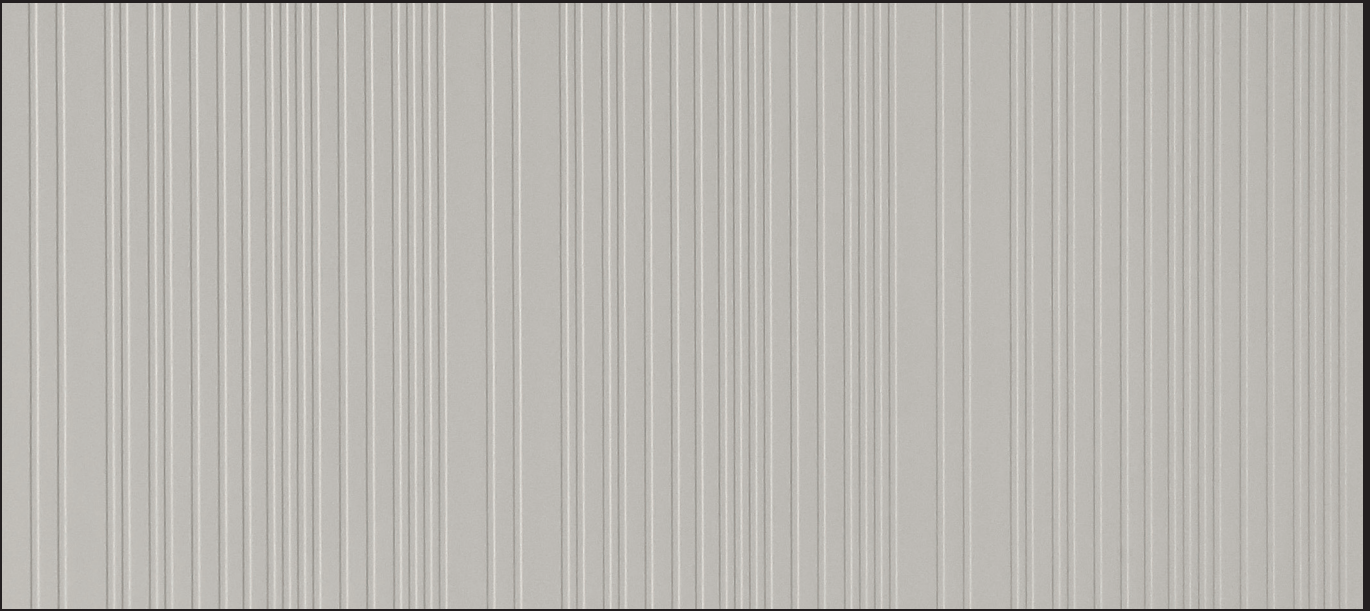


20932 SHR | Glitter

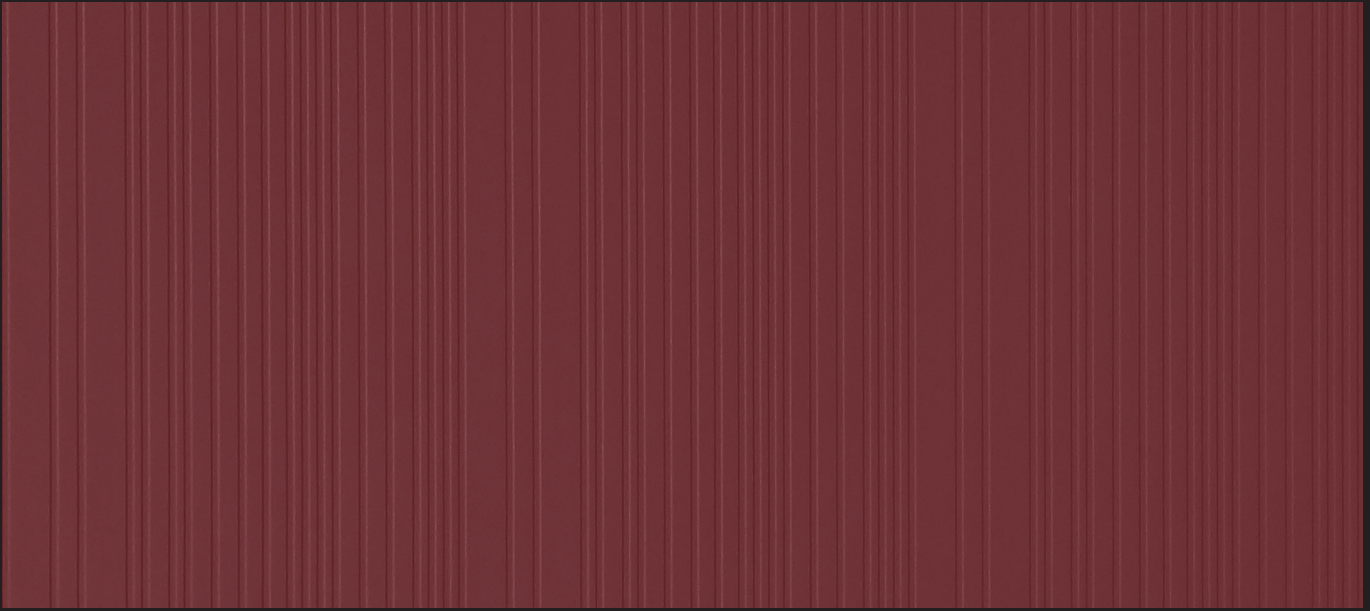




20929 SHR | Metaline Grey



20133 SHR | Moon Stone

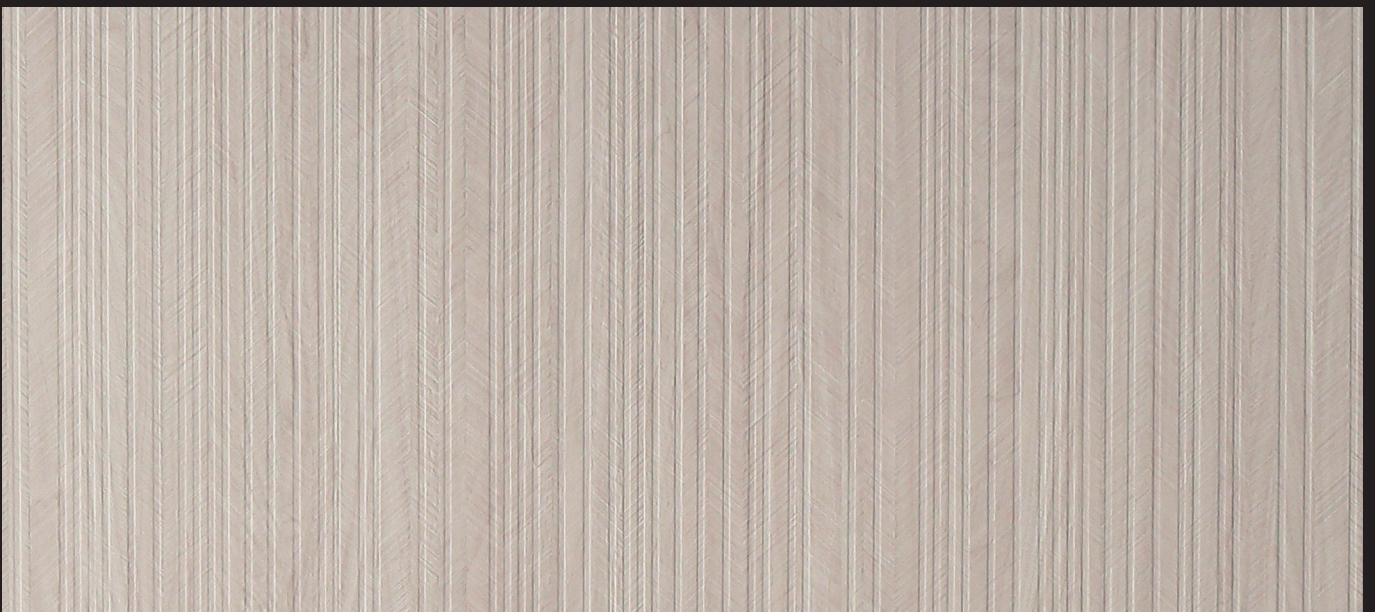


20138 SHR | Terracotta





20201 SHR | Maroon



25377 SHR | Dandy Wood Taupe



25378 SHR | Dandy Wood Anthracite



LEXUS
COLLECTION

STRAND

1.50 M M L A M I N A T E S

It features continuous straight-line grooves that creates a visual flow by bringing in symmetry. Turning any simple space into a unique work of elegance.

D

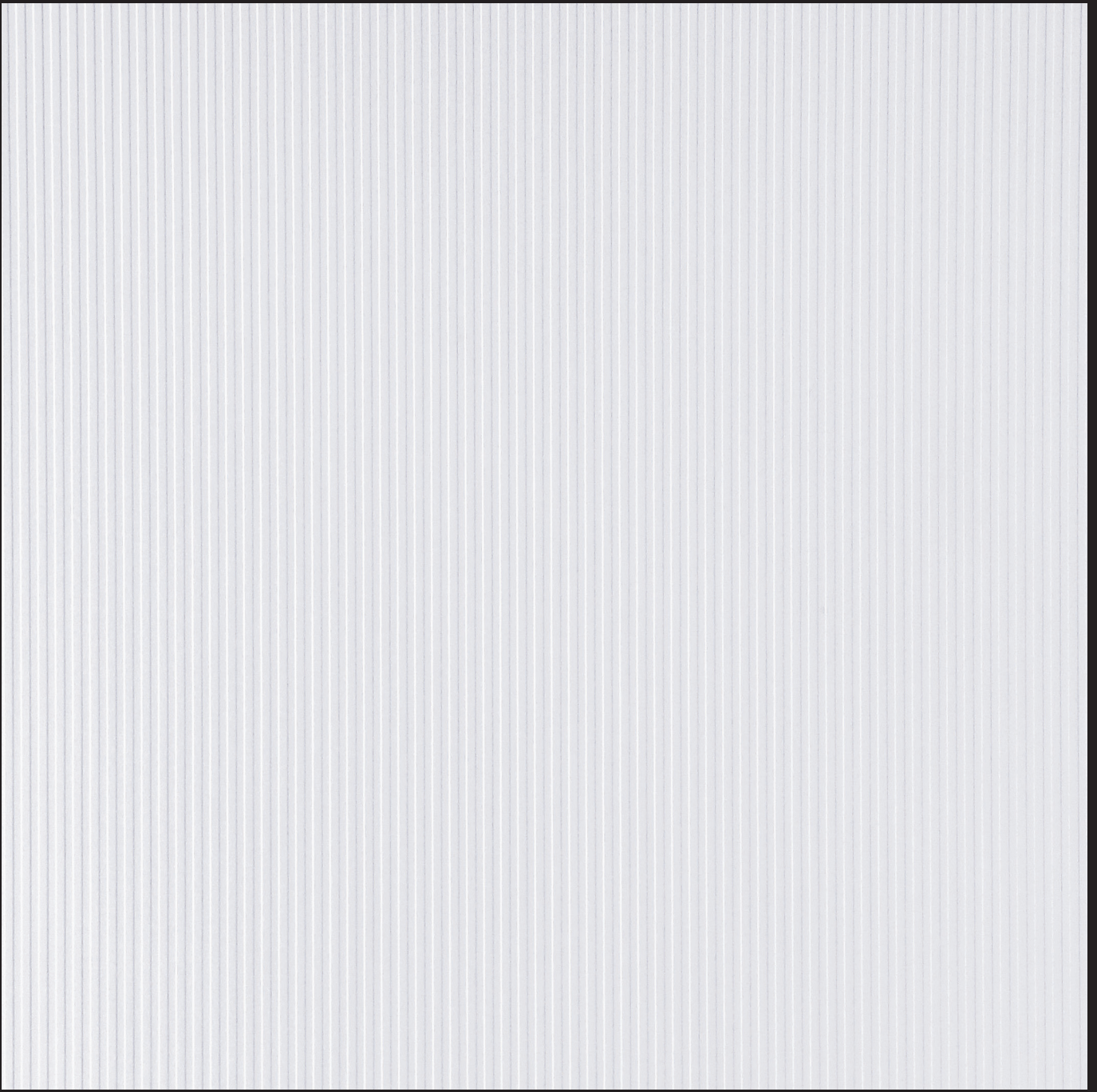
N

A

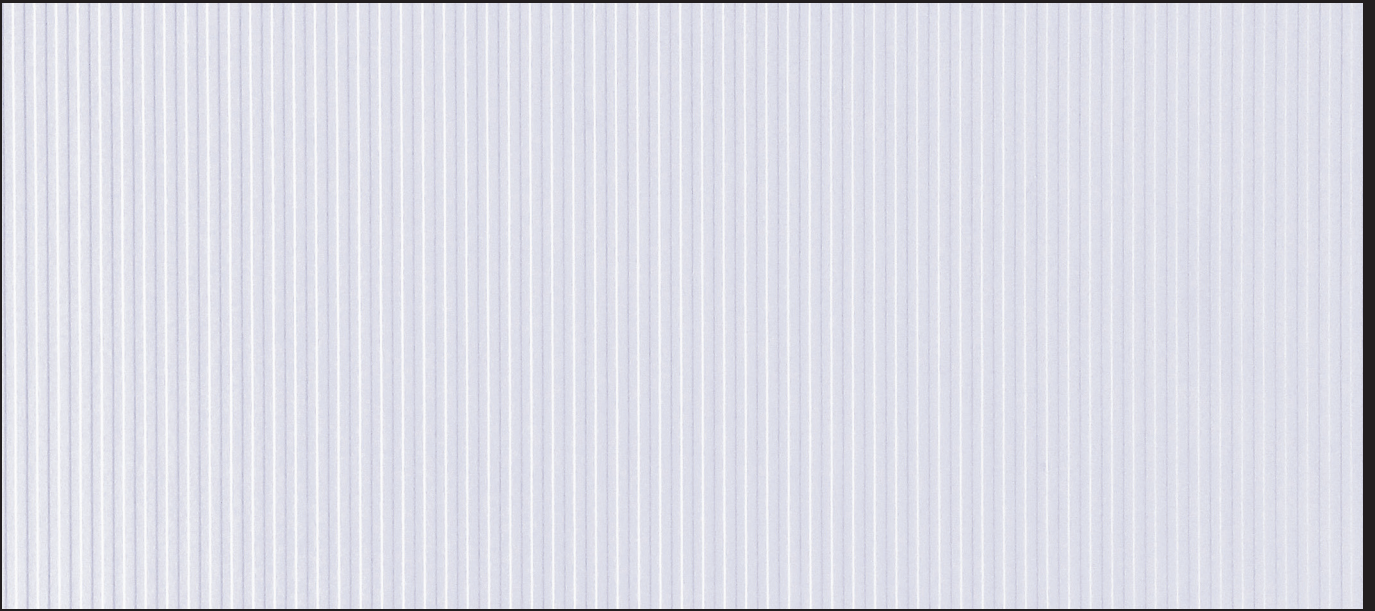
R

T

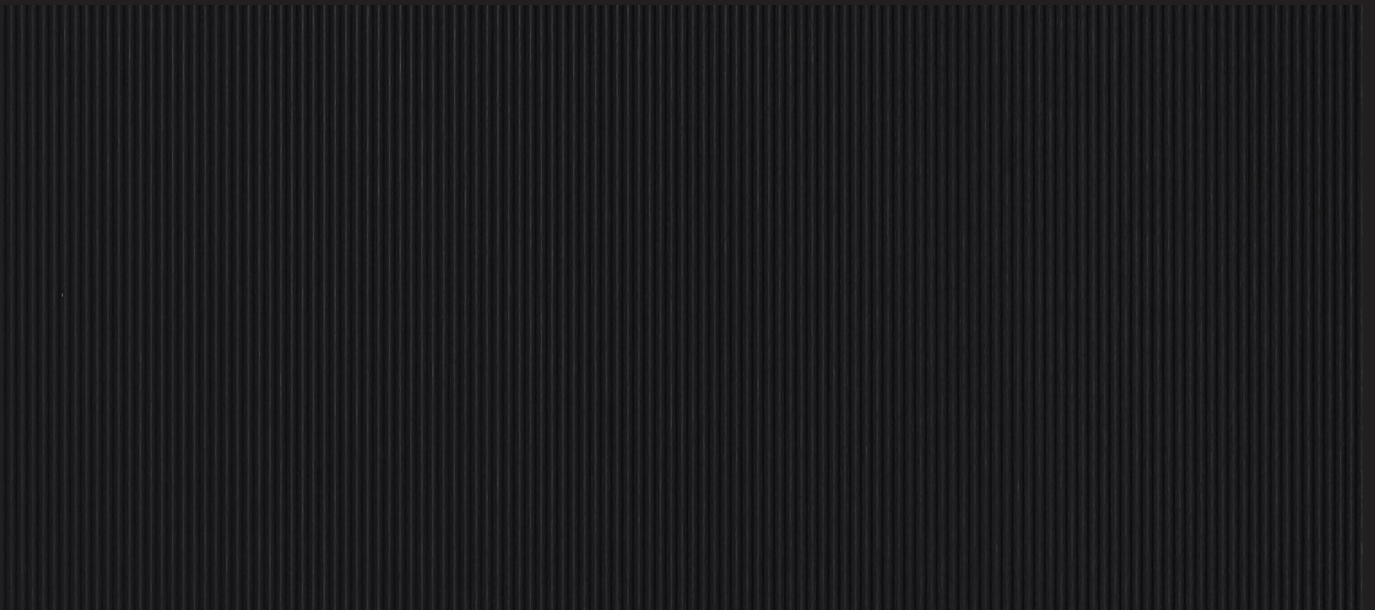
S



20111 STR | Designer White

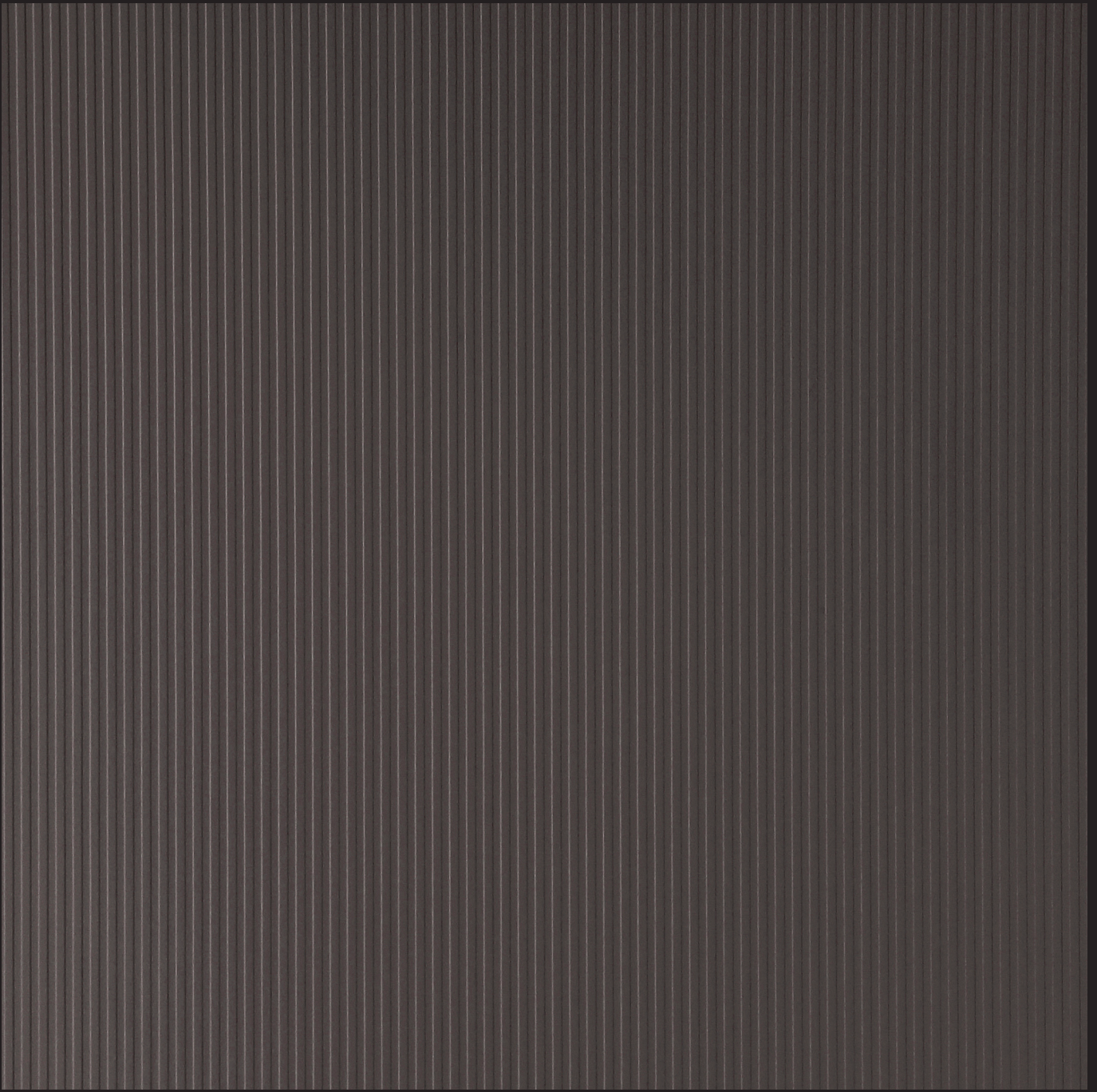


20270 STR | Silver Grey

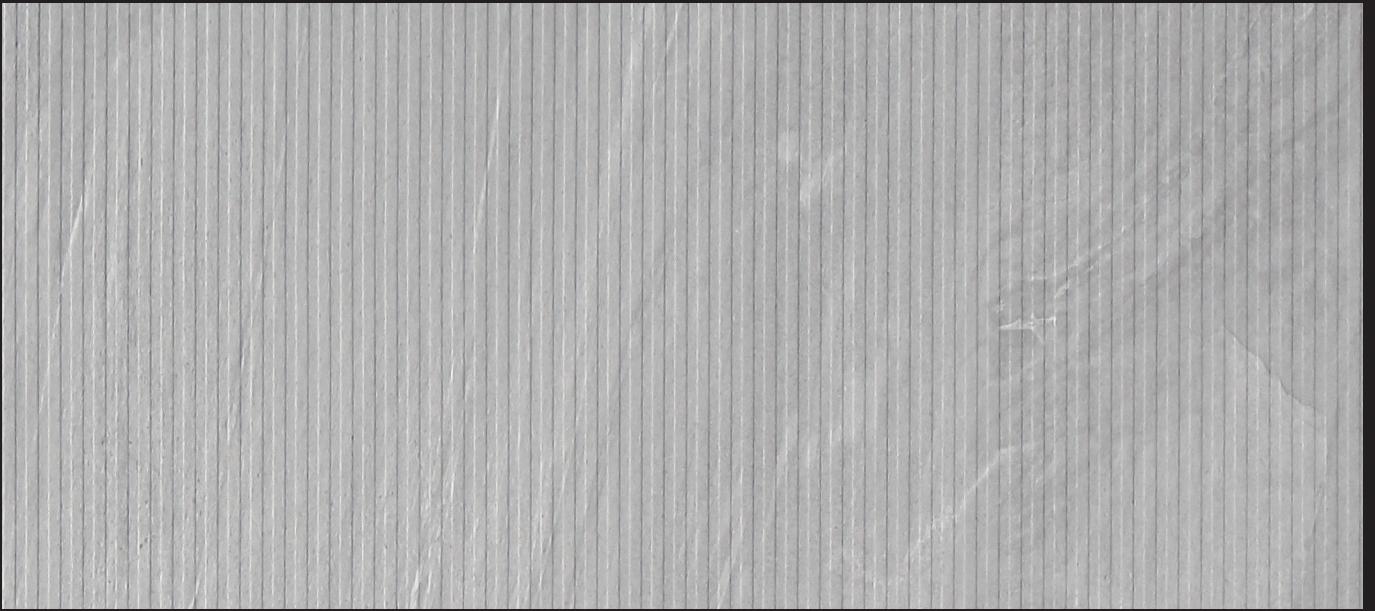


20401 STR | Black

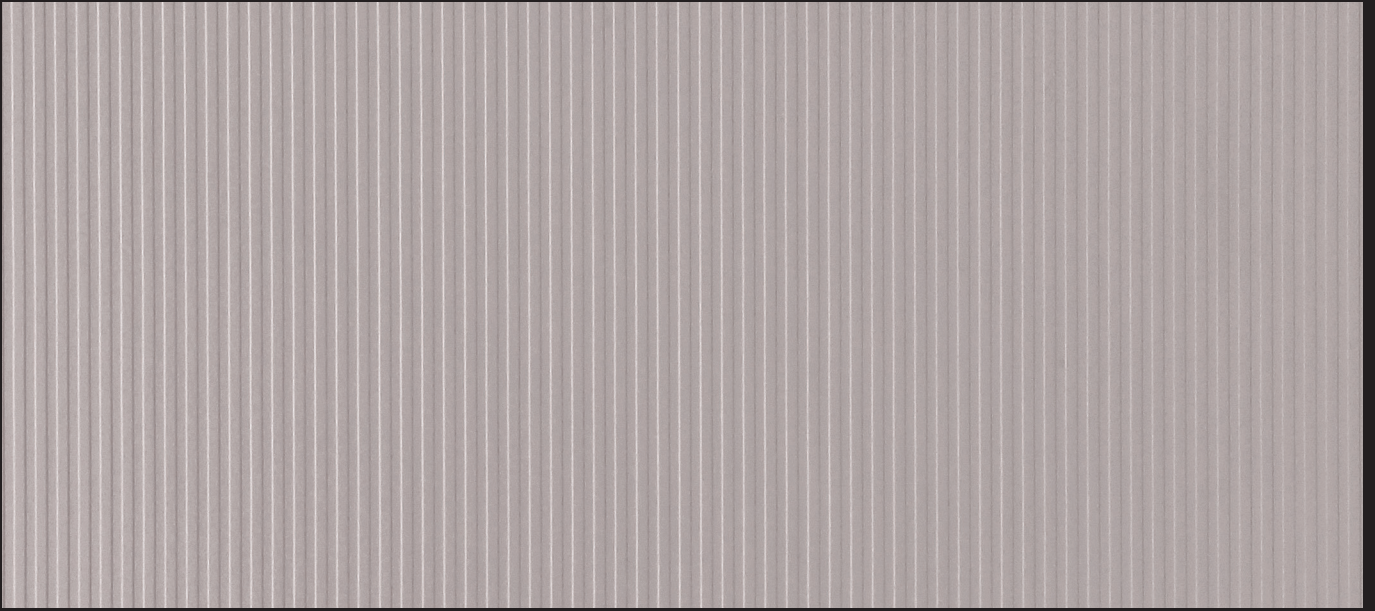




20274 STR | Pine Nut

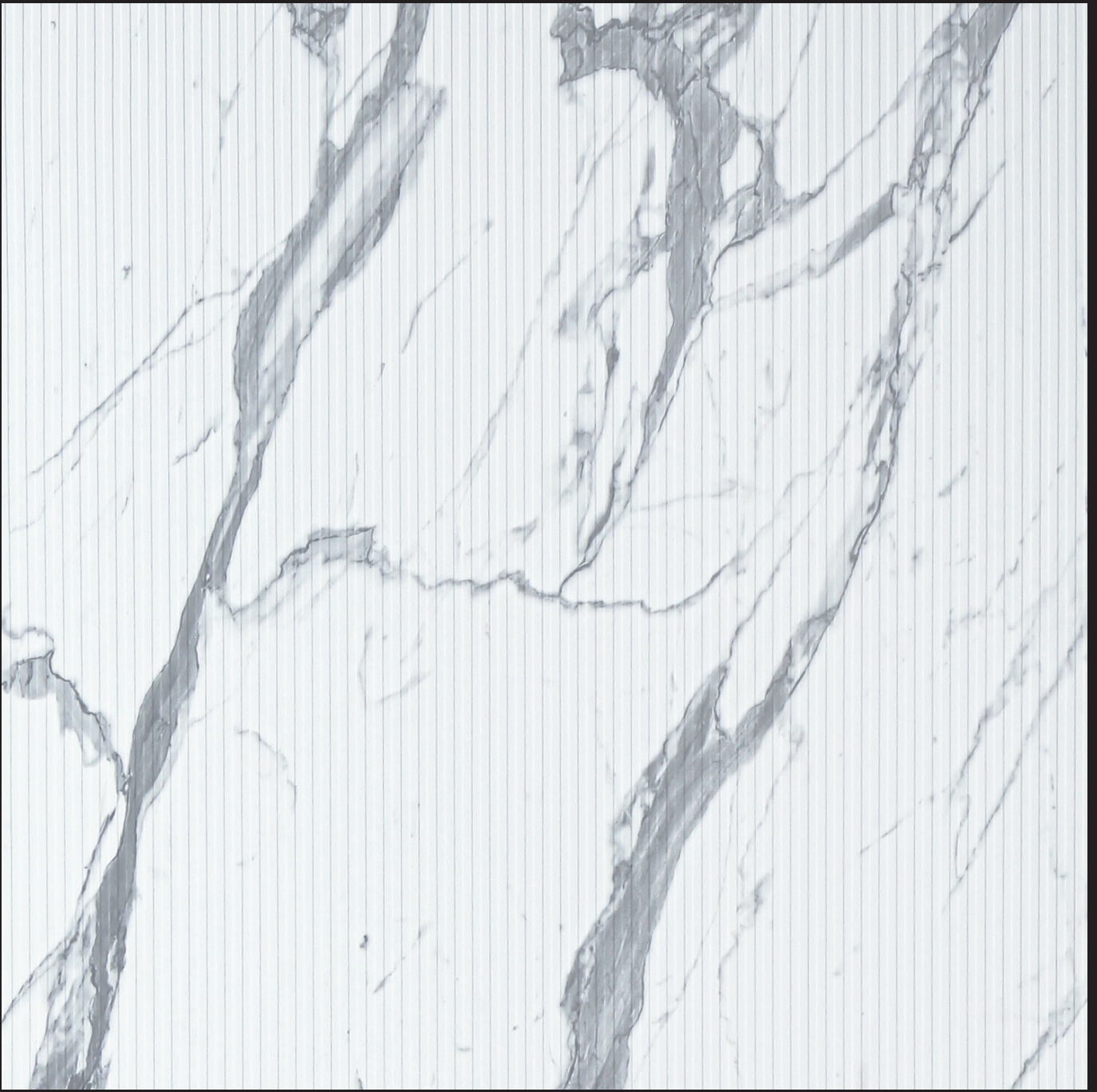


25580 STR | Sandstone Grey

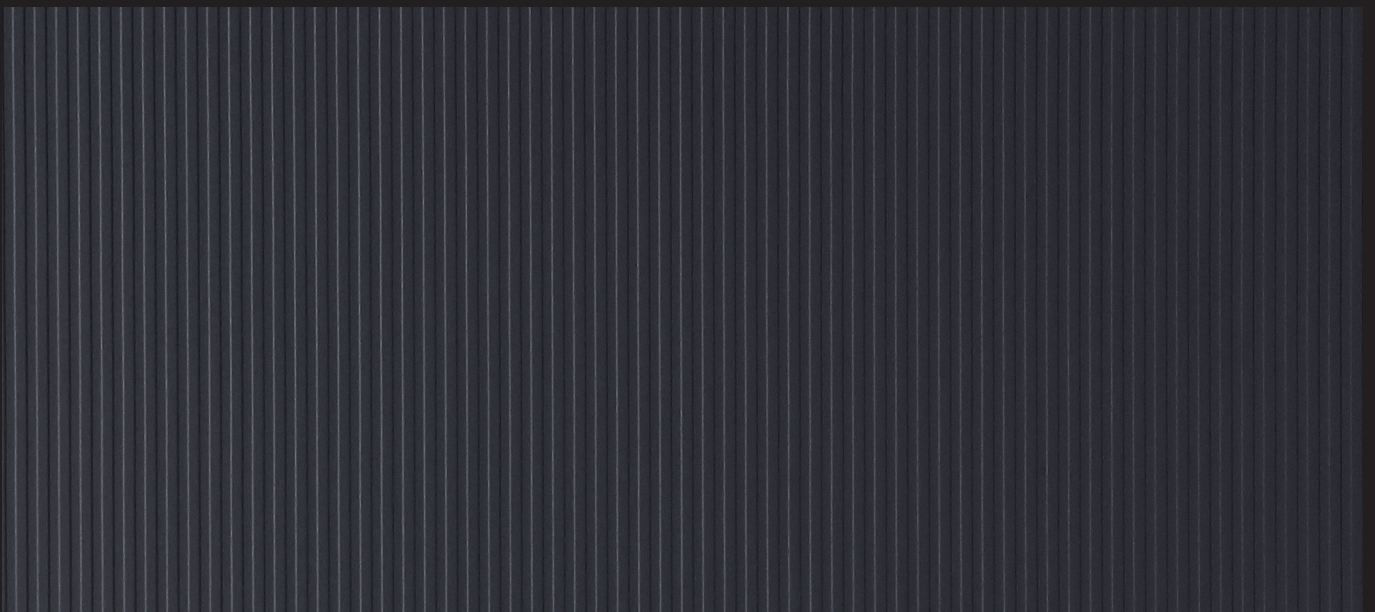


20132 STR | Cyclone

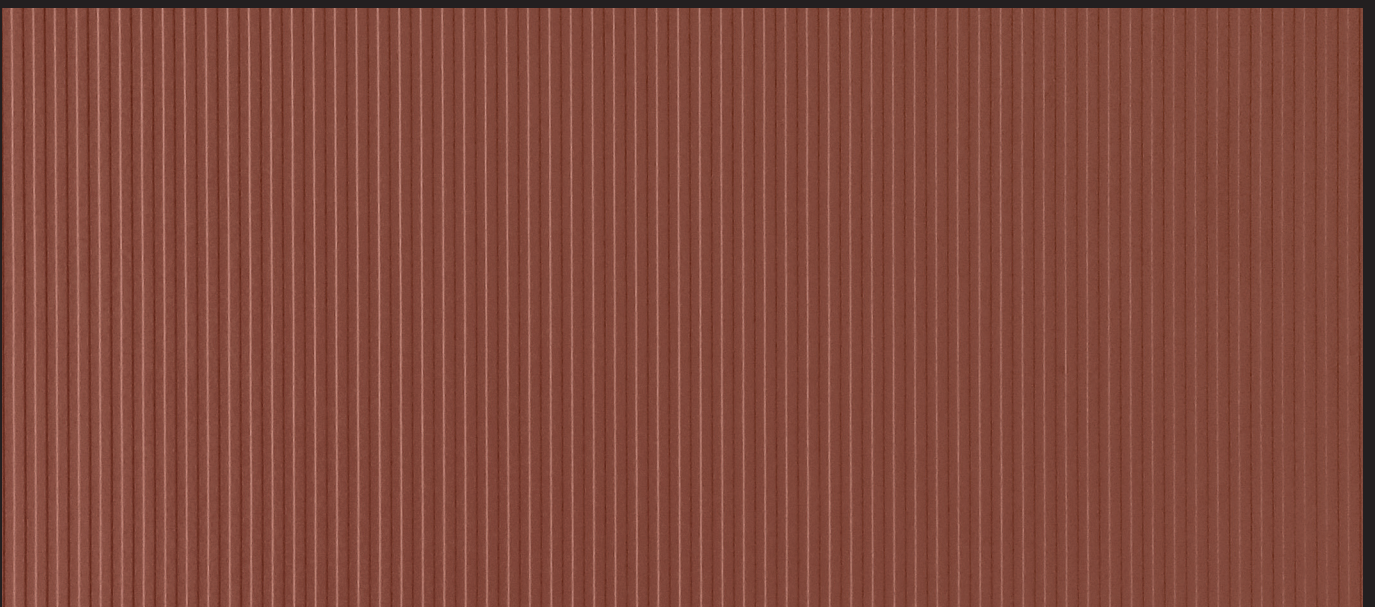




25574 STR | Statuario



20277 STR | Charcoal

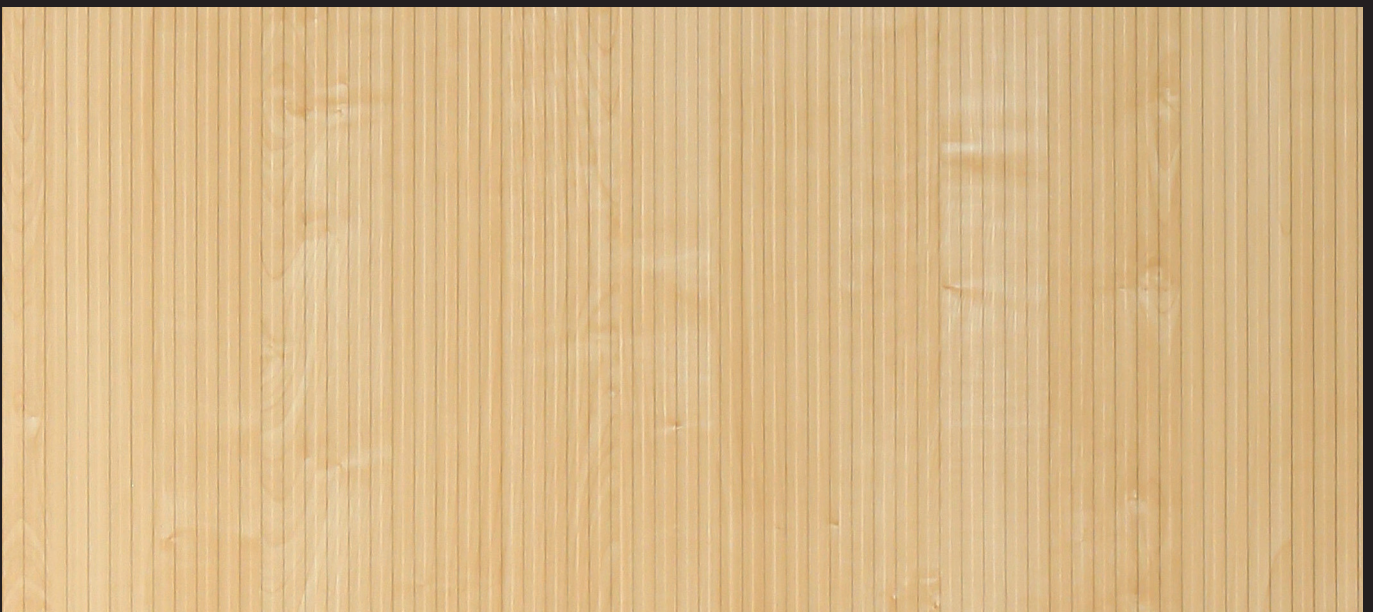


20205 STR | Brick

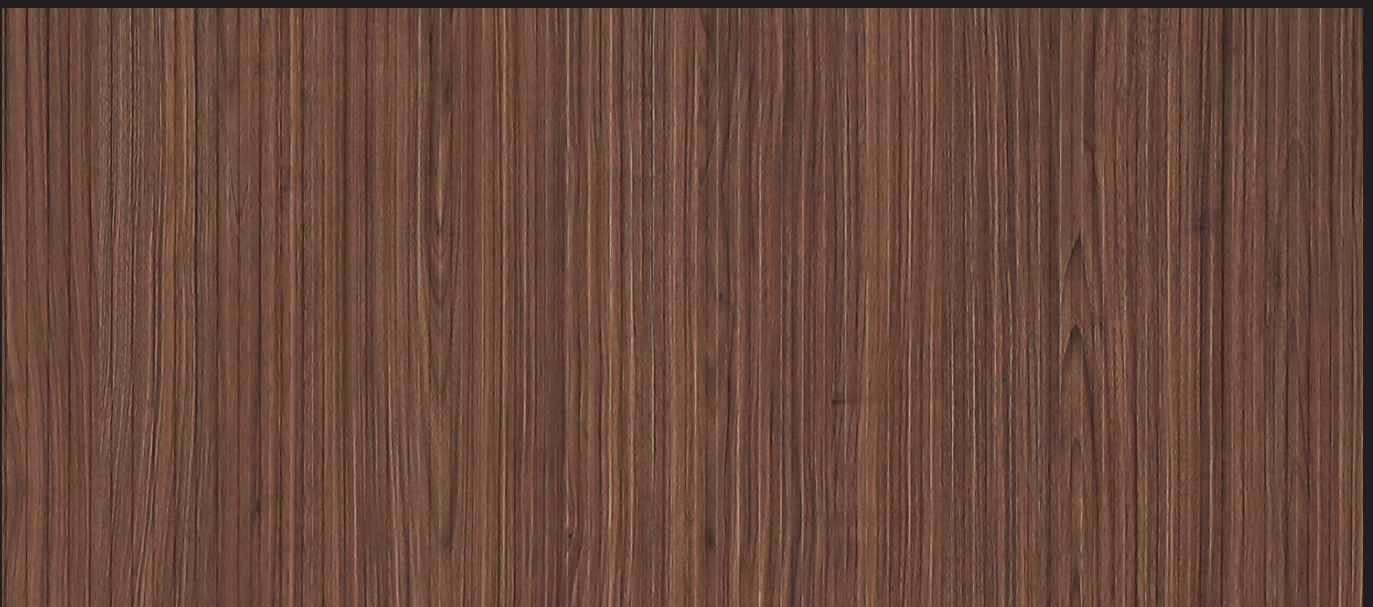




25334 STR | Canyon Walnut

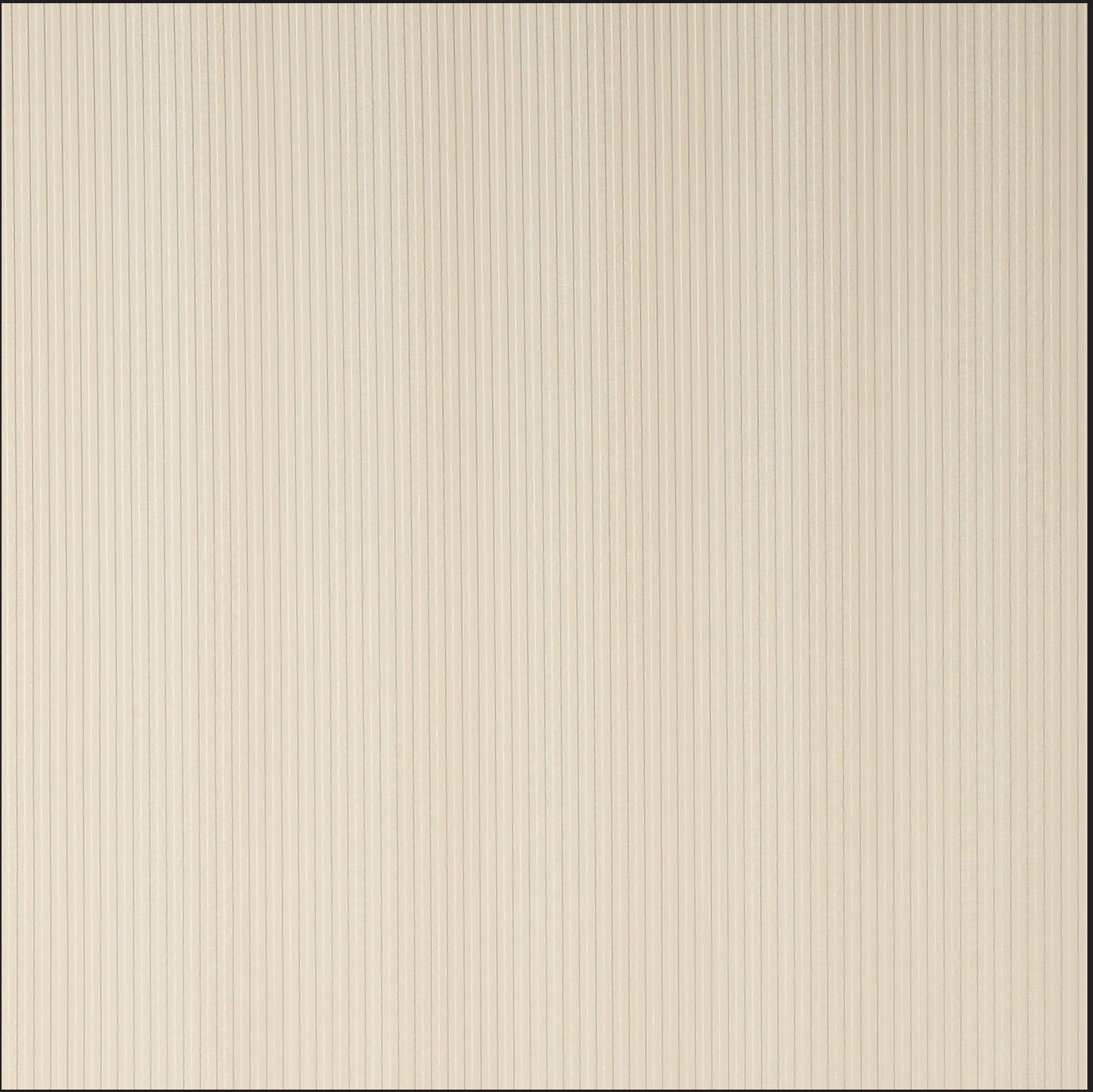


20712 STR | Crystal Maple

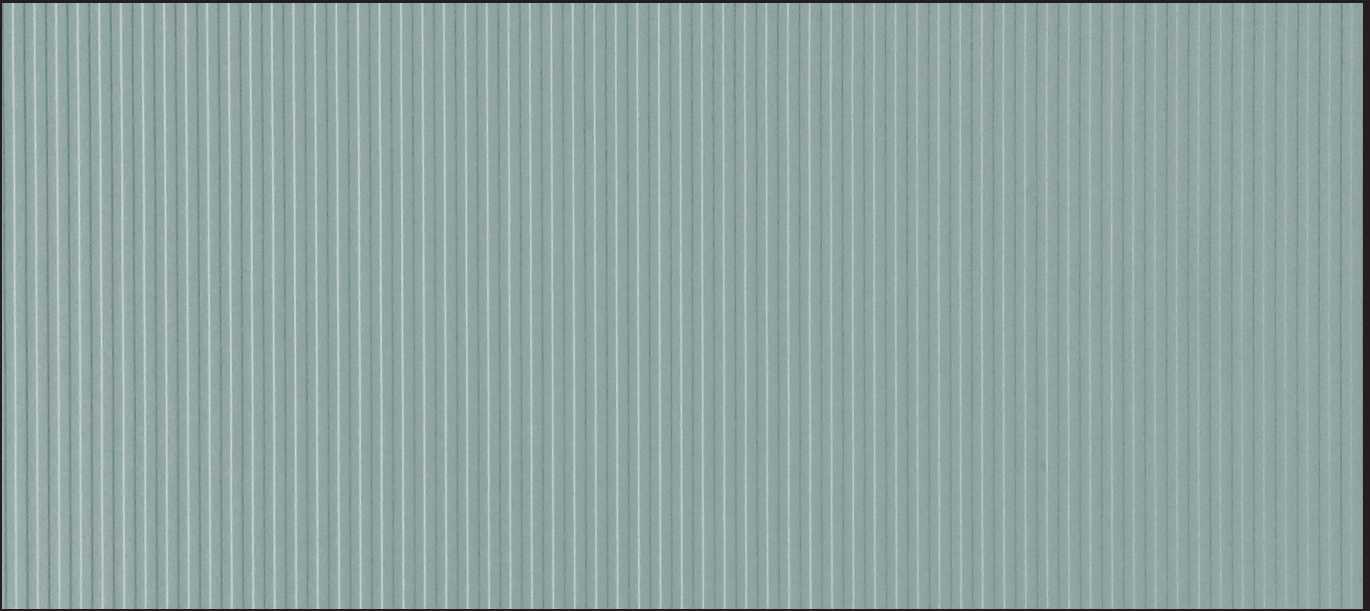


25375 STR | Saturno Walnut

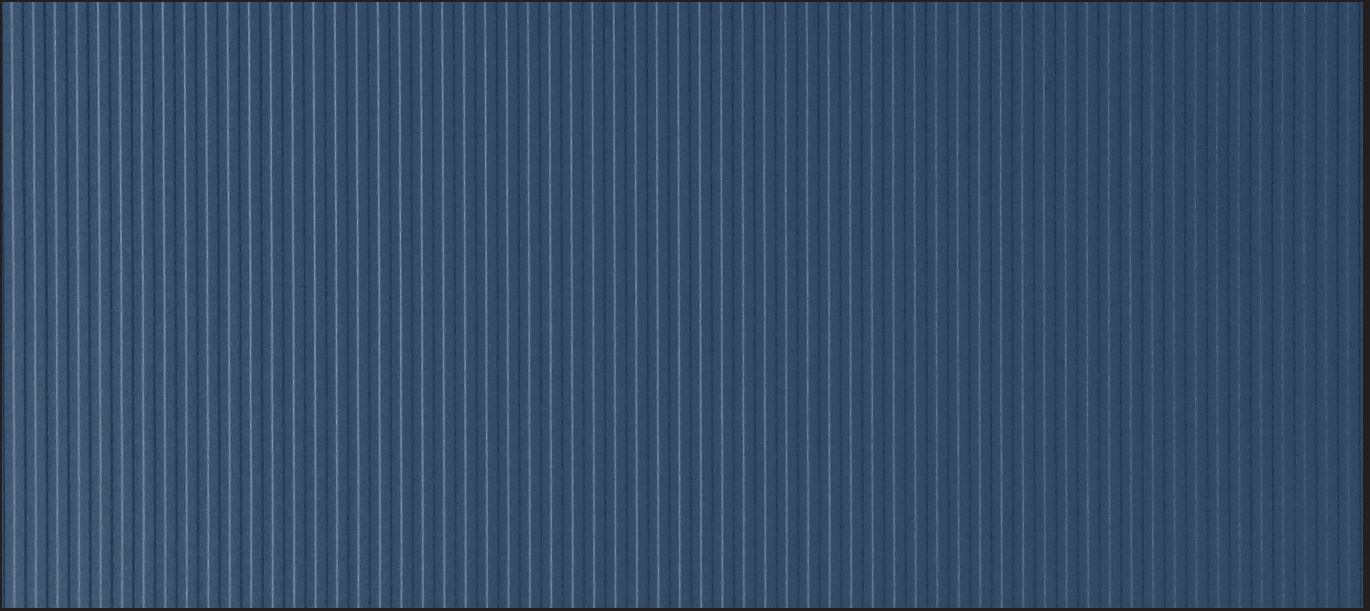




20718 STR | Silver Maple



20243 STR | Sea Green



20362 STR | Niagara



TECHNICAL SPECIFICATION

Sr. No.	Performance Characteristic	TEST METHOD	UNIT	SPECIFIED VALUES	Typical Values	SPECIFIED VALUES	Typical Values
01	Product description and test protocol	IS 2046:1995 (Reaffirmed: 2020)		TEXTURED FINISH, THICKNESS 1.50 MM, ONE SIDE DECOR AND OTHER SIDE SANDED			
PHYSICAL AND DIMENSIONAL PROPERTIES							
02	Thickness & Maximum variation	Clause 5.3	mm	1.5 ± 0.15	Conforms	1.5 ± 0.15	Conforms
03	Fibers, Hairs & Scratches	Clause 5.4.1.1	mm/m ²	10.0 (max)	Conforms	10.0 (max)	Conforms
04	Length & Width	Clause 5.4.6	mm	+10mm /-0mm	Conforms	+10mm /-0mm	Conforms
05	Edges Straightness	Clause 5.4.7	mm	1.5 (max)	Conforms	1.5 (max)	Conforms
06	Edges Squareness	Clause 5.4.8	mm/M	1.5 (max)	Conforms	1.5 (max)	Conforms
07	Flatness	Clause 5.4.5	mm	120 max	Conforms	120 max	Conforms
08	Density	EN ISO 1183-1: 2004	g/cm ³	1.35 (min)	Conforms	1.35 (min)	Conforms
09	Dimensional Stability at Elevated temperatures						
	Machine Direction	Annex F	%	0.44 (max.)	Conforms	0.44 (max.)	Conforms
	Cross Direction	Annex F	%	0.86 (max.)	Conforms	0.86 (max.)	Conforms
10	Dimensional Stability at 20°C						
	Machine Direction	Annex G	%	0.32 (max.)	Conforms	0.32 (max.)	Conforms
	Cross Direction	Annex G	%	0.48 (max.)	Conforms	0.48 (max.)	Conforms
MECHANICAL PROPERTIES							
11	Resistance to immersion in boiling water						
	Thickness increase	Annex D	%	8.5 max	Conforms	11.8 max	Conforms
	Mass Increase	Annex D	%	7.5 max	Conforms	9.0 max	Conforms
	Appearance	Annex D	Grade	Not worse than 4	Conforms	Not worse than 4	Conforms
12	Resistance to Impact by small ball						
	Spring force	Annex H	Load, N	20 (min)	Conforms	20 (min)	Conforms
13	Resistance to Cracking	Annex K	Grade	Not worse than 4	Conforms	Not worse than 4	Conforms
SURFACE PROPERTIES							
14	Resistance to Scratching	Annex L	Load, N	2.0 (min)	Conforms	2.0 (min)	Conforms
15	Resistance to Steam	Annex T	Grade	Not worse than 4	Conforms	Not worse than 4	Conforms
16	Resistance to Dry Heat @ 180°C	Annex E	Appearance	Not worse than 4	Conforms	Not worse than 4	Conforms
17	Resistance of Surface Wear	Annex C	Revolution	350 min.	Conforms	350 min.	Conforms
18	Resistance to Staining						
	Groups 1 & 2	Annex M	Rating	Not worse than 5	Conforms	Not worse than 5	Conforms
	Groups 3 & 4	Annex M	Rating	Not worse than 4	Conforms	Not worse than 4	Conforms
19	Resistance to Cigarette Burns	Annex P	Appearance	Not worse than 3	Conforms	Not worse than 3	Conforms
20	Resistance to Color Change						
	In Xenon Arc Light	Annex N	Grade	Not worse than 6	Conforms	Not worse than 6	Conforms
FIRE PERFORMANCE							
21	Spread of Flame and Fire Propagation Property	BS 476 Parts 6 & 7	Class/ Index	--	Class 2	--	Class 1
22	Reaction to Fire	EN 13501-1	Class	See foot note for Fire Performance**			
HEALTH AND ENVIRONMENTAL PROPERTIES							
22	Formaldehyde Emission Release	EN 16516:2017	Ppm	0.1	0.02	0.1	0.02
23	Volatile Organic Compounds (VOC) Emission	ISO 16005-9	Class	--	A	--	A
		UL2818-2013	Certification	Greenguard Gold			
24	Food Safe	EN 13130-1		--	Yes	--	Yes
25	Transfer of constituents to Food during contact	EN 1186-1, 3 & 14 :2002	Mitigation	Mitigation of simulants is less than maximum permitted by regulation			
26	Anti-Viral Efficacy & activity		ISO 21702-2019				
	% Reduction in 24 hours	%		95% (min.)	99.9% (min.)	95% (min.)	99.9% (min.)
	Activity after 24 hours	Log Reduction		2.0 (min.)	Exceeds	2.0 (min.)	Exceeds
27	Anti-bacterial Efficacy & activity		JIS 2801-2012				
	% Reduction in 24 hours	%		95.0 (min)	99.99	95.0 (min)	99.99
	Activity after 24 hours	Log Reduction		2.0 (min)	Exceeds	2.0 (min)	Exceeds
28	Anti-Fungus Efficacy		ASTM G-21-2015				
	Growth after 28 days	Class		1	0 (No Growth)	1	0 (No Growth)

** Product type	Typical EN 13501-1 classification
HPL type F bonded to non combustible substrates	B-s2,d0
HPL type F bonded to FR wood-based substrates	C-s2,d0
HPL type S or P bonded to non-FR wood-based substrates	D-s2,d0

Note: Fire test performance will depend on laminate thickness and construction, substrate type and thickness, and adhesive used. It is advised to contact the laminate manufacturer for details of test reports and certifications held, and for information on fire test methods and specifications.

Note: Greenlam products are manufactured thoroughly to standards. The values given above are to the best of knowledge but without liability/warranty, expressed or implied.

Limited Warranty:

Greenlam industries Limited (GREENLAM®) warrants to the original buyer that (GREENLAM®) HPL will be free of defects, under normal, proper and intended usage, within acceptable manufacturing specification, buyer's remedy in case of claims, as a result of defective HPL, shall be limited to only the replacement of HPL by (GREENLAM®)

Note:

The samples shown here are only indicative of the colour patterns and finishes available.

Disclaimer:

* "As per the test report SARS Cov-2 virus gets more than 99% retarded after 45 mins of the contact"

** "As per the test report virus gets 99.99% retarded in 24 hours of contact"

*** "As per test report bacteria gets 99.99% retarded after 24 hours of contact"



CML 0008305879



CORPORATE OFFICE

Greenlam Industries Limited

2nd Floor, West Wing, Worldmark 1, Aerocity IGI Airport Hospitality District, New Delhi - 110037,
Tel: 91 11-4279-1399, Email: info@greenlam.com, Website: www.greenlamindustries.com
Toll-free No : 1800 833 0004

**GREENLAM EXPERIENCE CENTER
KOLKATA**

25/B, Shop No. E & F.
Mirza Ghalib Road, Park Street.
Opposite: Westside Mall, Kolkata - 700016.
Contact No: - +91-98303-18020; +91-62921-26662
Email: experiencecenter.kolkata@greenlam.com
Toll-free No : 1800 833 0004

AHMEDABAD

Showroom No- 1 & 2, Ground Floor,
Block-A, Westgate Business Bay, SG Highway,
Ahmedabad - 380051
Contact No. : +91-9909938024
Email: experiencecenter.ahmedabad@greenlam.com
Toll-free No : 1800 833 0004



SCAN THE QR CODE TO
DOWNLOAD THE E-CATALOGUE